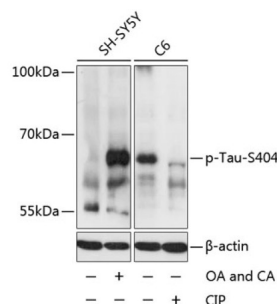
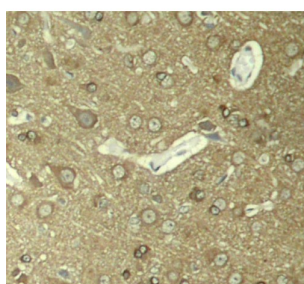


Microtubule-Associated Protein Tau Phospho-Ser404 (MAPT pS404) Antibody

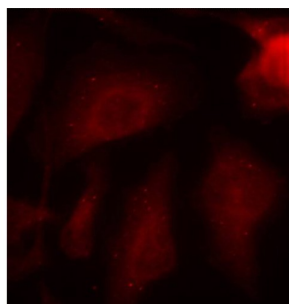
Catalogue No.: abx000222



Western blot analysis of lysates from SH-SY5Y and C6 cells, using Phospho-Tau-S404 Antibody at 1/2000 dilution. SH-SY5Y cells were treated by Okadaic Acid (100nM) for 1 hour and Calyculin A (100nM) for 30 minutes after serum-starvation overnight. C6 cell lysates were treated by CIP at 37°C for 1 hour. Secondary antibody: HRP-conjugated Goat anti-Rabbit IgG (H+L) at 1/10000 dilution. Lysates/proteins: 25 µg per lane. Blocking buffer: 3% BSA. Exposure time: 3s.



Immunohistochemistry analysis of paraffin-embedded Rat hippocampal region tissue from a model with Alzheimer, using Phospho-Tau-S404 Antibody. Microwave antigen retrieval performed in 0.01 M Tris/EDTA Buffer (pH 9.0) prior to IHC staining.



Immunofluorescence analysis of methanol-fixed HeLa cells using Phospho-Tau-S404 Antibody.

MAPT (pS404) Antibody is a Rabbit Polyclonal antibody against MAPT (pS404). This gene encodes the microtubule-associated protein tau (MAPT) whose transcript undergoes complex, regulated alternative splicing, giving rise to several mRNA species. MAPT transcripts are differentially expressed in the nervous system, depending on stage of neuronal maturation and neuron type. MAPT gene mutations have been associated with several neurodegenerative disorders such as Alzheimer's disease, Pick's disease, frontotemporal dementia, cortico-basal degeneration and progressive supranuclear palsy.

Target: Microtubule-Associated Protein Tau Phospho-Ser404 (MAPT pS404)

Clonality: Polyclonal

Target Modification: Ser404

Modification: Phosphorylation

Reactivity: Human, Mouse, Rat

Datasheet

Version: 7.0.0
Revision date: 19 Jun 2025



Tested Applications:	ELISA, WB, IHC, IF/ICC
Host:	Rabbit
Recommended dilutions:	ELISA: 1 µg/ml, WB: 1/500 - 1/2000, IHC-P: 1/50 - 1/100, IF/ICC: 1/100 - 1/200. Not tested in IHC-F. Optimal dilutions/concentrations should be determined by the end user.
Conjugation:	Unconjugated
Immunogen:	A synthetic phosphorylated peptide around S404 of human Tau.
Isotype:	IgG
Form:	Liquid
Purification:	Purified by affinity chromatography.
Storage:	Aliquot and store at -20°C. Avoid repeated freeze/thaw cycles.
UniProt Primary AC:	P10636 (UniProt , ExPASy)
Gene Symbol:	MAPT
GeneID:	4137
OMIM:	157140
NCBI Accession:	NP_005901.2
HGNC:	6893
KEGG:	hsa:4137
Ensembl:	ENSG00000186868
String:	9606.ENSP00000340820
Molecular Weight:	Calculated MW: 79 kDa Observed MW: 65 kDa
Buffer:	PBS, pH 7.3, containing 0.01% thimerosal, 50% glycerol.
Concentration:	> 0.2 mg/ml

Datasheet

Version: 7.0.0

Revision date: 19 Jun 2025



Note:

THIS PRODUCT IS FOR RESEARCH USE ONLY. NOT FOR USE IN DIAGNOSTIC, THERAPEUTIC OR COSMETIC PROCEDURES. NOT FOR HUMAN OR ANIMAL CONSUMPTION.

For Reference Only