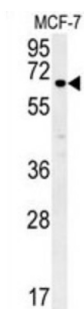
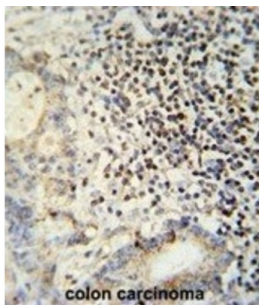


Epithelial Splicing Regulatory Protein 1 (ESRP1) Antibody

Catalogue No.: abx032669



ESRP1 Antibody is a Rabbit Polyclonal antibody against ESRP1.

Target: Epithelial Splicing Regulatory Protein 1 (ESRP1)

Clonality: Polyclonal

Reactivity: Human

Tested Applications: ELISA, WB, IHC

Host: Rabbit

Recommended dilutions: WB: 1/2000, IHC-P: 1/50 - 1/100. Not tested in IHC-F. Optimal dilutions/concentrations should be determined by the end user.

Conjugation: Unconjugated

Immunogen: KLH-conjugated synthetic peptide between 182-211 amino acids from the N-terminal region of human ESRP1.

Isotype: IgG

Form: Liquid

Purification: Purified through a protein A column, followed by peptide affinity purification.

Datasheet

Version: 3.0.0
Revision date: 01 Oct 2025



Storage:	Aliquot and store at -20°C. Avoid repeated freeze/thaw cycles.
UniProt Primary AC:	Q6NXG1 (UniProt , ExPASy)
NCBI Accession:	NP_001030087.2, NP_001116297.1, NP_001116298.1, NP_001116299.1, NP_060167.2
KEGG:	hsa:54845
String:	9606.ENSP00000405738
Molecular Weight:	Calculated MW: 75.6 kDa
Buffer:	PBS containing 0.09% sodium azide.
Specificity:	Predicted to react with Mouse and Rat ESRP1.
Note:	THIS PRODUCT IS FOR RESEARCH USE ONLY. NOT FOR USE IN DIAGNOSTIC, THERAPEUTIC OR COSMETIC PROCEDURES. NOT FOR HUMAN OR ANIMAL CONSUMPTION.

For Reference Only