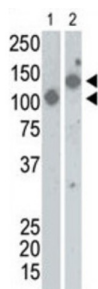


SARS virus Sn Antibody

Catalogue No.: abx032683



WB analysis of recombinant Spike Proteins, Lane 1: aa17-537 and Lane 2: aa17-756 using SARS virus Sn Antibody.

An outbreak of atypical pneumonia, referred to as severe acute respiratory syndrome (SARS) and first identified in Guangdong Province, China, has spread to several countries. The severity of this disease is such that the mortality rate appears to be ~3 to 6%. A number of laboratories worldwide have undertaken the identification of the causative agent. The National Microbiology Laboratory in Canada obtained the Tor2 isolate from a patient in Toronto, and succeeded in growing a coronavirus-like agent in African Green Monkey Kidney (Vero E6) cells. This coronavirus has been named publicly by the World Health Organization and member laboratories as ?SARS virus? The SARS membrane proteins, including the major proteins S (Spike) and M (Membrane), are inserted into the endoplasmic reticulum Golgi intermediate compartment (ERGIC) while full length replicated RNA (+ strands) assemble with the N (nucleocapsid) protein. The virus then migrates through the Golgi complex and eventually exits the cell, likely by exocytosis. The site of viral attachment to the host cell resides within the S protein. Oligomeric spike (S) glycoproteins extend from SARS membranes. These integral membrane proteins assemble within the endoplasmic reticulum of infected cells and are subsequently endoproteolyzed in the Golgi, generating noncovalently associated S1 and S2 fragments. Once on the surface of infected cells and virions, peripheral S1 fragments bind carcinoembryonic antigen-related cell adhesion molecule (CEACAM) receptors, and this triggers membrane fusion reactions mediated by integral membrane S2 fragments.

Target: SARS virus Sn

Clonality: Polyclonal

Reactivity: Virus

Tested Applications: ELISA, WB

Host: Rabbit

Recommended dilutions: WB: 1/1000. Optimal dilutions/concentrations should be determined by the end user.

Conjugation: Unconjugated

Immunogen: KLH-conjugated synthetic peptide between 13-42 amino acids from the N-terminus of SARS CoV Spike protein.

Isotype: IgG

Form: Liquid

Datasheet

Version: 4.0.0
Revision date: 22 Dec 2025



Purification: Purified by saturated ammonium sulfate (SAS) precipitation followed by dialysis against PBS.

Storage: Aliquot and store at -20°C. Avoid repeated freeze/thaw cycles.

UniProt Primary AC: P59594 ([UniProt](#), [ExPASy](#))

GeneID: [1489668](#)

KEGG: vg:1489668

Molecular Weight: Calculated MW: 139 kDa

Buffer: PBS containing 0.09% sodium azide.

Concentration: 2 mg/ml

Note: THIS PRODUCT IS FOR RESEARCH USE ONLY. NOT FOR USE IN DIAGNOSTIC, THERAPEUTIC OR COSMETIC PROCEDURES. NOT FOR HUMAN OR ANIMAL CONSUMPTION.

For Reference Only