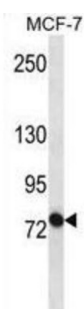
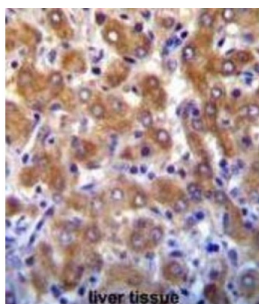


ATP Binding Cassette Subfamily B Member 10 (ABCB10) Antibody

Catalogue No.: abx032687



The membrane-associated protein ABCB10 is a member of the superfamily of ATP-binding cassette (ABC) transporters. ABC proteins transport various molecules across extra and intra-cellular membranes. ABC genes are divided into seven distinct subfamilies (ABC1, MDR/TAP, MRP, ALD, OABP, GCN20, White). This protein is a member of the MDR/TAP subfamily. Members of the MDR/TAP subfamily are involved in multidrug resistance. The function of this mitochondrial protein is unknown.

Target: ATP Binding Cassette Subfamily B Member 10 (ABCB10)

Clonality: Polyclonal

Reactivity: Human

Tested Applications: ELISA, WB, IHC

Host: Rabbit

Recommended dilutions: WB: 1/1000 - 1/2000, IHC-P: 1/10 - 1/50. Not tested in IHC-F. Optimal dilutions/concentrations should be determined by the end user.

Conjugation: Unconjugated

Immunogen: KLH-conjugated synthetic peptide between 1-27 amino acids from the N-terminal region of human ABCB10.

Isotype: IgG

Datasheet

Version: 3.0.0
Revision date: 03 Jul 2025



Form:	Liquid
Purification:	Purified through a protein A column, followed by peptide affinity purification.
Storage:	Aliquot and store at -20°C. Avoid repeated freeze/thaw cycles.
UniProt Primary AC:	Q9NRK6 (UniProt , ExPASy)
Gene Symbol:	ABCB10
String:	9606.ENSP00000355637
Molecular Weight:	Calculated MW: 79.1 kDa
Buffer:	PBS containing 0.09% sodium azide.
Note:	THIS PRODUCT IS FOR RESEARCH USE ONLY. NOT FOR USE IN DIAGNOSTIC, THERAPEUTIC OR COSMETIC PROCEDURES. NOT FOR HUMAN OR ANIMAL CONSUMPTION.

For Reference Only