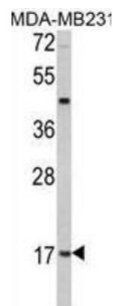
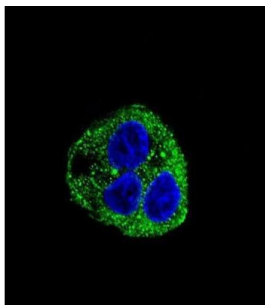


Leptin (LEP) Antibody

Catalogue No.: abx032702



Leptin (LEP) is an adipocyte-secreted protein that regulates body fat and endocrine functions. Leptin is similar to the mouse obesity protein encoded by the obese gene (ob). In mouse studies, mutations in this gene are linked to severe and morbid obesity.

Target: Leptin (LEP)

Clonality: Polyclonal

Reactivity: Human

Tested Applications: ELISA, WB, IF/ICC

Host: Rabbit

Recommended dilutions: WB: 1/1000, IF/ICC: 1/10 - 1/50. Optimal dilutions/concentrations should be determined by the end user.

Conjugation: Unconjugated

Immunogen: KLH-conjugated synthetic peptide between 134-166 amino acids from the C-terminal region of human Leptin (LEP).

Isotype: IgG

Form: Liquid

Datasheet

Version: 2.0.0
Revision date: 05 Oct 2025



| | |
|----------------------------|--|
| Purification: | Purified through a protein G column, eluted with high and low pH buffers and neutralized immediately, followed by dialysis against PBS. |
| Storage: | Aliquot and store at -20°C. Avoid repeated freeze/thaw cycles. |
| UniProt Primary AC: | P41159 (UniProt , ExPASy) |
| KEGG: | hsa:3952 |
| String: | 9606.ENSP00000312652 |
| Molecular Weight: | Calculated MW: 18.6 kDa |
| Buffer: | PBS containing 0.09% sodium azide. |
| Note: | THIS PRODUCT IS FOR RESEARCH USE ONLY. NOT FOR USE IN DIAGNOSTIC, THERAPEUTIC OR COSMETIC PROCEDURES. NOT FOR HUMAN OR ANIMAL CONSUMPTION. |

For Reference Only