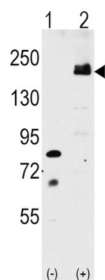
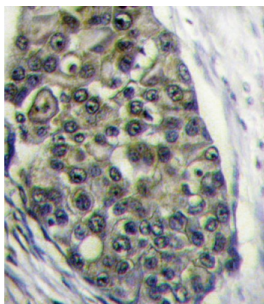


## Low Density Lipoprotein Receptor Related Protein 6 (LRP6) Antibody

Catalogue No.: abx032705



WB analysis of (1) non-transfected 293 cell lysates, and (2) 293 cell lysates transfected with the LRP6 gene.



IHC-P analysis of human breast carcinoma tissue, with DAB staining.

LRP6 is essential for the Wnt/beta catenin signaling pathway, probably by acting as a coreceptor together with Frizzled for Wnt. It is a specific, high-affinity receptor for DKK1 and DKK2, but not DKK3. The interaction with DKK1 blocks LRP6-mediated Wnt/beta catenin signaling via LRP6 removal via Kremen proteins-mediated endocytosis.

<b>Target:</b>	Low Density Lipoprotein Receptor Related Protein 6 (LRP6)
<b>Clonality:</b>	Polyclonal
<b>Reactivity:</b>	Human
<b>Tested Applications:</b>	ELISA, WB, IHC
<b>Host:</b>	Rabbit
<b>Recommended dilutions:</b>	WB: 1/1000, IHC-P: 1/10 - 1/50. Not tested in IHC-F. Optimal dilutions/concentrations should be determined by the end user.
<b>Conjugation:</b>	Unconjugated
<b>Immunogen:</b>	KLH-conjugated synthetic peptide between 1531-1560 amino acids from the C-terminal region of human LRP6.
<b>Isotype:</b>	IgG
<b>Form:</b>	Liquid

# Datasheet

Version: 4.0.0  
Revision date: 05 Oct 2025



<b>Purification:</b>	Purified by saturated ammonium sulfate (SAS) precipitation followed by dialysis against PBS.
<b>Storage:</b>	Aliquot and store at -20°C. Avoid repeated freeze/thaw cycles.
<b>UniProt Primary AC:</b>	O75581 ( <a href="#">UniProt</a> , <a href="#">ExPASy</a> )
<b>Gene Symbol:</b>	LRP6
<b>GeneID:</b>	<a href="#">4040</a>
<b>NCBI Accession:</b>	NP_002327.2
<b>KEGG:</b>	hsa:4040
<b>String:</b>	<a href="#">9606.ENSP00000261349</a>
<b>Molecular Weight:</b>	Calculated MW: 180 kDa
<b>Buffer:</b>	PBS containing 0.09% sodium azide.
<b>Note:</b>	THIS PRODUCT IS FOR RESEARCH USE ONLY. NOT FOR USE IN DIAGNOSTIC, THERAPEUTIC OR COSMETIC PROCEDURES. NOT FOR HUMAN OR ANIMAL CONSUMPTION.

For Reference Only