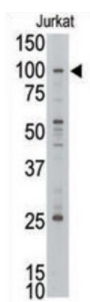
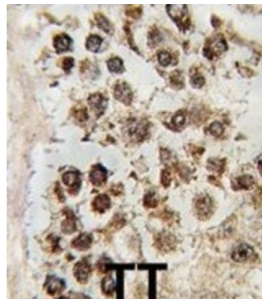


MLLT10, Histone Lysine Methyltransferase DOT1L Cofactor (MLLT10) Antibody

Catalogue No.: abx032716



Translocations affecting chromosome 11q23 involve many partner chromosome regions and occur in various leukemias. The 11q23 gene involved in the translocations is MLL. MLLT10 is the partner gene to MLL1 involved in t (10;11) (p12;q23) translocations. In an analysis of two leukemia patients, the in t (10;11) (p12;q23) translocation fuses MLL1, a SET domain containing histone methyltransferase, to the MLLT10 gene. The MLLT10 gene encodes a predicted 1,027-amino acid protein containing an N-terminal zinc finger and a C-terminal leucine zipper domain. The MLLT10 gene is one of the few MLL partner genes to be independently rearranged with a third gene in leukemia, the CALM gene in the t (10;11) (p12;q14) translocation. Chimeric fusion proteins MLL/AF10 and CALM/AF10 consistently retain the leucine zipper motif of MLLT10. The leucine zipper interacts with GAS41, a protein previously identified as the product of an amplified gene in a glioblastoma. GAS41 interacts with integrase interactor-1 (INI1), a component of the SWI/SNF complex, which acts to remodel chromatin and to modulate transcription. Retention of the leucine zipper in the MLL and CALM fusions suggested that a key feature of these chimeric proteins may be their ability to interfere in normal gene regulation through interaction with the adenosine triphosphate-dependent chromatin remodeling complexes.

Target: MLLT10, Histone Lysine Methyltransferase DOT1L Cofactor (MLLT10)

Clonality: Polyclonal

Reactivity: Human

Tested Applications: ELISA, WB, IHC

Host: Rabbit

Recommended dilutions: WB: 1/1000, IHC-P: 1/10 - 1/50. Not tested in IHC-F. Optimal dilutions/concentrations should be determined by the end user.

Datasheet

Version: 3.0.0

Revision date: 24 Aug 2025



Conjugation:	Unconjugated
Immunogen:	KLH-conjugated synthetic peptide between 998-1027 amino acids from the C-terminal region of human MLLT10 (AF10).
Isotype:	IgG
Form:	Liquid
Purification:	Purified through a protein G column, eluted with high and low pH buffers and neutralized immediately, followed by dialysis against PBS.
Storage:	Aliquot and store at -20°C. Avoid repeated freeze/thaw cycles.
UniProt Primary AC:	P55197 (UniProt , ExPASy)
KEGG:	hsa:8028
String:	9606.ENSP00000307411
Molecular Weight:	Calculated MW: 113 kDa
Buffer:	PBS containing 0.09% sodium azide.
Note:	THIS PRODUCT IS FOR RESEARCH USE ONLY. NOT FOR USE IN DIAGNOSTIC, THERAPEUTIC OR COSMETIC PROCEDURES. NOT FOR HUMAN OR ANIMAL CONSUMPTION.