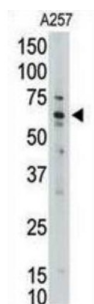


Protein ENL (MLLT1) Antibody

Catalogue No.: abx032717



Chromosome band 11q23 is the site of translocations in myeloid and lymphoid acute leukemias, pediatric leukemias, and treatment-induced secondary acute myelogenous leukemia. The translocation breakpoints cluster in a restricted region of the HRX gene resulting in chimeric genes that encode an N-terminal portion of Hrx fused to various partner proteins. Myeloid/lymphoid or mixed-lineage leukemia translocated to 1 (MLLT1) is a nuclear protein with transcriptional transactivation properties that is fused to Hrx in t (11;19) leukemias. The minimal MLLT1 sequence required for transcription activation was narrowed to the C-terminal 90 amino acids.

Target:	Protein ENL (MLLT1)
Clonality:	Polyclonal
Reactivity:	Human
Tested Applications:	ELISA, WB
Host:	Rabbit
Recommended dilutions:	WB: 1/1000. Optimal dilutions/concentrations should be determined by the end user.
Conjugation:	Unconjugated
Immunogen:	KLH-conjugated synthetic peptide between 523-552 amino acids from the C-terminal region of human MLLT1.
Isotype:	IgG
Form:	Liquid
Purification:	Purified through a protein G column, eluted with high and low pH buffers and neutralized immediately, followed by dialysis against PBS.
Storage:	Aliquot and store at -20°C. Avoid repeated freeze/thaw cycles.
UniProt Primary AC:	Q03111 (UniProt , ExPASy)

Datasheet

Version: 7.0.0

Revision date: 22 Jul 2025



NCBI Accession: NP_005925.2

KEGG: hsa:4298

String: [9606.ENSP00000252674](#)

Molecular Weight: Calculated MW: 62.1 kDa

Buffer: PBS containing 0.09% sodium azide.

Note: THIS PRODUCT IS FOR RESEARCH USE ONLY. NOT FOR USE IN DIAGNOSTIC, THERAPEUTIC OR COSMETIC PROCEDURES. NOT FOR HUMAN OR ANIMAL CONSUMPTION.

For Reference Only