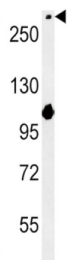
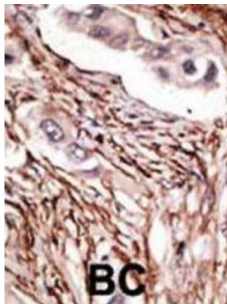
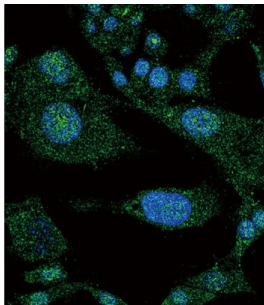


Neurogenic Locus Notch Homolog Protein 3 (NOTCH3) Antibody

Catalogue No.: abx032737



NOTCH3 is the third discovered human homologue of the *Drosophila melanogaster* type I membrane protein notch. In *Drosophila*, notch interaction with its cell-bound ligands (delta, serrate) establishes an intercellular signalling pathway that plays a key role in neural development. Homologues of the notch-ligands have also been identified in human, but precise interactions between these ligands and the human notch homologues remains to be determined. Mutations in NOTCH3 have been identified as the underlying cause of cerebral autosomal dominant arteriopathy with subcortical infarcts and leukoencephalopathy (CADASIL).

Target: Neurogenic Locus Notch Homolog Protein 3 (NOTCH3)

Clonality: Polyclonal

Reactivity: Mouse

Tested Applications: ELISA, WB, IHC, IF/ICC

Host: Rabbit

Datasheet

Version: 3.0.0
Revision date: 30 May 2025



Recommended dilutions: WB: 1/1000, IHC-P: 1/50 - 1/100, IF/ICC: 1/10 - 1/50. Not tested in IHC-F. Optimal dilutions/concentrations should be determined by the end user.

Conjugation: Unconjugated

Immunogen: KLH-conjugated synthetic peptide between 2291-2321 amino acids from the C-terminal region of human NOTCH3.

Isotype: IgG

Form: Liquid

Purification: Purified through a protein G column, eluted with high and low pH buffers and neutralized immediately, followed by dialysis against PBS.

Storage: Aliquot and store at -20°C. Avoid repeated freeze/thaw cycles.

UniProt Primary AC: Q9UM47 ([UniProt](#), [ExPASy](#))

NCBI Accession: NP_000426.2

String: [9606.ENSP00000263388](#)

Molecular Weight: Calculated MW: 244 kDa

Buffer: PBS containing 0.09% sodium azide.

Specificity: Predicted to react with Human NOTCH3.

Note: THIS PRODUCT IS FOR RESEARCH USE ONLY. NOT FOR USE IN DIAGNOSTIC, THERAPEUTIC OR COSMETIC PROCEDURES. NOT FOR HUMAN OR ANIMAL CONSUMPTION.