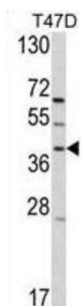


## RAI3 Antibody

Catalogue No.: abx032746



Retinoic acid plays a critical role in development, cellular growth, and differentiation. The specific function for the protein from this retinoic acid-induced gene has not yet been determined; however, it may play a role in embryonic development and epithelial cell differentiation. Rai3 is a member of the type 3 G protein-coupling receptor family, characterized by the signature 7-transmembrane domain motif. It may also be involved in interaction between retinoid acid and G protein signalling pathways.

<b>Target:</b>	RAI3
<b>Clonality:</b>	Polyclonal
<b>Reactivity:</b>	Human
<b>Tested Applications:</b>	ELISA, WB
<b>Host:</b>	Rabbit
<b>Recommended dilutions:</b>	WB: 1/1000. Optimal dilutions/concentrations should be determined by the end user.
<b>Conjugation:</b>	Unconjugated
<b>Immunogen:</b>	KLH-conjugated synthetic peptide between 328-357 amino acids from the C-terminal region of human RAI3.
<b>Isotype:</b>	IgG
<b>Form:</b>	Liquid
<b>Purification:</b>	Purified through a protein G column, eluted with high and low pH buffers and neutralized immediately, followed by dialysis against PBS.
<b>Storage:</b>	Aliquot and store at -20°C. Avoid repeated freeze/thaw cycles.
<b>UniProt Primary AC:</b>	Q8NFJ5 ( <a href="#">UniProt</a> , <a href="#">ExPASy</a> )
<b>KEGG:</b>	hsa:9052

# Datasheet

Version: 3.0.0

Revision date: 16 Mar 2025



**String:** [9606.ENSF00000014914](#)

**Molecular Weight:** Calculated MW: 40.3 kDa

**Buffer:** PBS containing 0.09% sodium azide.

**Note:** THIS PRODUCT IS FOR RESEARCH USE ONLY. NOT FOR USE IN DIAGNOSTIC, THERAPEUTIC OR COSMETIC PROCEDURES. NOT FOR HUMAN OR ANIMAL CONSUMPTION.

For Reference Only