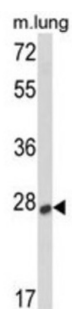
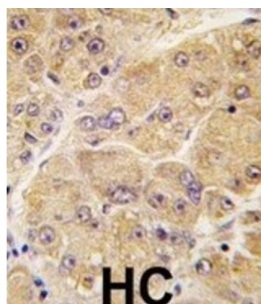


Sclerostin (SOST) Antibody

Catalogue No.: abx032757



Sclerostin is a secreted glycoprotein with a C-terminal cysteine knot-like (CTCK) domain and sequence similarity to the DAN (differential screening-selected gene aberrative in neuroblastoma) family of bone morphogenetic protein (BMP) antagonists. Loss-of-function mutations in this gene are associated with an autosomal-recessive disorder, sclerosteosis, which causes progressive bone overgrowth. A deletion downstream of the sclerostin gene, which causes reduced sclerostin expression, is associated with a milder form of the disorder called van Buchem disease.

Target: Sclerostin (SOST)**Clonality:** Polyclonal**Reactivity:** Human**Tested Applications:** ELISA, WB, IHC**Host:** Rabbit**Recommended dilutions:** WB: 1/1000, IHC-P: 1/10 - 1/50. Not tested in IHC-F. Optimal dilutions/concentrations should be determined by the end user.**Conjugation:** Unconjugated**Immunogen:** KLH-conjugated synthetic peptide between 134-163 amino acids from the Central region of human SOST.**Isotype:** IgG

Datasheet

Version: 3.0.0

Revision date: 02 Oct 2025



Form:	Liquid
Purification:	Purified through a protein A column, eluted with high and low pH buffers and neutralized immediately, followed by dialysis against PBS.
Storage:	Aliquot and store at -20°C. Avoid repeated freeze/thaw cycles.
UniProt Primary AC:	Q9BQB4 (UniProt , ExPASy)
NCBI Accession:	NP_079513.1
String:	9606.ENSP00000301691
Molecular Weight:	Calculated MW: 24 kDa
Buffer:	PBS containing 0.09% sodium azide.
Note:	THIS PRODUCT IS FOR RESEARCH USE ONLY. NOT FOR USE IN DIAGNOSTIC, THERAPEUTIC OR COSMETIC PROCEDURES. NOT FOR HUMAN OR ANIMAL CONSUMPTION.

For Reference Only