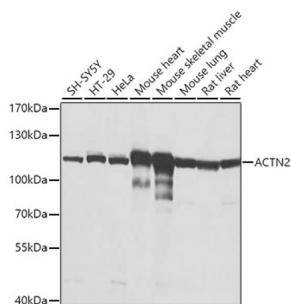
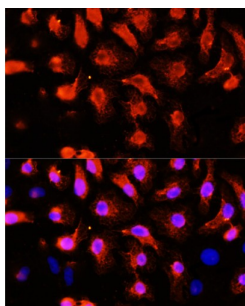


Actinin Alpha 2 (ACTN2) Antibody

Catalogue No.: abx002676



Western blot analysis of extracts of various cell lines using ACTN2 Antibody (1/1000 dilution).



Immunofluorescence analysis of HeLa cells using ACTN2 Antibody (1/100 dilution, 40x lens). Blue: DAPI for nuclear staining.

ACTN2 Antibody is a Rabbit Polyclonal antibody against ACTN2. Alpha actinins belong to the spectrin gene superfamily which represents a diverse group of cytoskeletal proteins, including the alpha and beta spectrins and dystrophins. Alpha actinin is an actin-binding protein with multiple roles in different cell types. In nonmuscle cells, the cytoskeletal isoform is found along microfilament bundles and adherens-type junctions, where it is involved in binding actin to the membrane. In contrast, skeletal, cardiac, and smooth muscle isoforms are localized to the Z-disc and analogous dense bodies, where they help anchor the myofibrillar actin filaments. This gene encodes a muscle-specific, alpha actinin isoform that is expressed in both skeletal and cardiac muscles. Several transcript variants encoding different isoforms have been found for this gene.

Target: Actinin Alpha 2 (ACTN2)

Clonality: Polyclonal

Reactivity: Human, Mouse, Rat

Tested Applications: WB, IF/ICC

Host: Rabbit

Recommended dilutions: WB: 1/500 - 1/2000, IF/ICC: 1/50 - 1/200. Optimal dilutions/concentrations should be determined by the end user.

Conjugation: Unconjugated

Immunogen: Recombinant fusion protein corresponding to human ACTN2

Datasheet

Version: 4.0.0
Revision date: 04 Oct 2025



Isotype:	IgG
Form:	Liquid
Purification:	Purified by affinity chromatography.
Storage:	Aliquot and store at -20°C. Avoid repeated freeze/thaw cycles.
UniProt Primary AC:	P35609 (UniProt , ExPASy)
Gene Symbol:	ACTN2
GeneID:	88
NCBI Accession:	NP_001094.1
KEGG:	hsa:88
String:	9606.ENSP00000443495
Molecular Weight:	Calculated MW: 103 kDa Observed MW: 104 kDa
Buffer:	PBS, pH 7.3, containing 0.02% sodium azide, 50% glycerol.
Concentration:	1 mg/ml
Note:	THIS PRODUCT IS FOR RESEARCH USE ONLY. NOT FOR USE IN DIAGNOSTIC, THERAPEUTIC OR COSMETIC PROCEDURES. NOT FOR HUMAN OR ANIMAL CONSUMPTION.