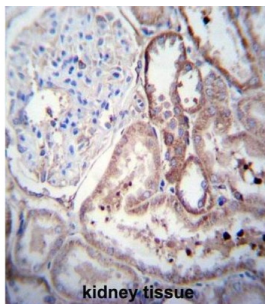
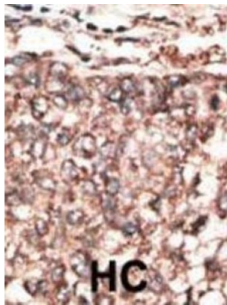


Spinal Cord-Derived Growth Factor B (SCDGFB) Antibody

Catalogue No.: abx032758



SCDGFB Antibody is a Rabbit Polyclonal antibody against SCDGFB.

Target:	Spinal Cord-Derived Growth Factor B (SCDGFB)
Clonality:	Polyclonal
Reactivity:	Human
Tested Applications:	ELISA, WB, IHC
Host:	Rabbit
Recommended dilutions:	WB: 1/1000, IHC-P: 1/10 - 1/50. Not tested in IHC-F. Optimal dilutions/concentrations should be determined by the end user.
Conjugation:	Unconjugated
Immunogen:	KLH-conjugated synthetic peptide between 313-341 amino acids from the Central region of human SCDGFB.
Isotype:	IgG
Form:	Liquid
Purification:	Purified through a protein G column, eluted with high and low pH buffers and neutralized immediately, followed by dialysis against PBS.

Datasheet

Version: 3.0.0

Revision date: 11 Sep 2025



Storage: Aliquot and store at -20°C. Avoid repeated freeze/thaw cycles.

UniProt Primary AC: Q9EQT1 ([UniProt](#), [ExPASy](#))

String: [10116.ENSARNOP00000068187](#)

Molecular Weight: Calculated MW: 42.8 kDa

Buffer: PBS containing 0.09% sodium azide.

Specificity: Predicted to react with Mouse and Rabbit Pdgfd.

Note: THIS PRODUCT IS FOR RESEARCH USE ONLY. NOT FOR USE IN DIAGNOSTIC, THERAPEUTIC OR COSMETIC PROCEDURES. NOT FOR HUMAN OR ANIMAL CONSUMPTION.

For Reference Only