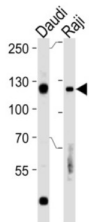
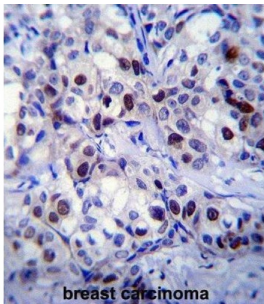
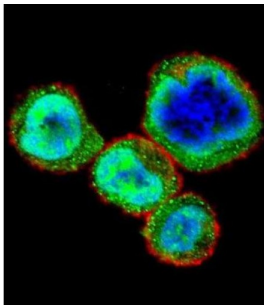


Retinoblastoma Protein 1 (RB1) Antibody

Catalogue No.: abx032759



The retinoblastoma protein is a tumor suppressor protein that is dysfunctional in many types of cancer.[1] One highly studied function of pRb is to prevent excessive cell growth by inhibiting cell cycle progression until a cell is ready to divide. pRb belongs to the pocket protein family, whose members have a pocket for the functional binding of other proteins.[2][3] Should an oncogenic protein, such as those produced by cells infected by high-risk types of human papillomaviruses, bind and inactivate pRb, this can lead to cancer. Retinoblastoma (RB) is an embryonic malignant neoplasm of retinal origin. It almost always presents in early childhood and is often bilateral.

Target: Retinoblastoma Protein 1 (RB1)

Clonality: Polyclonal

Reactivity: Human

Tested Applications: ELISA, WB, IHC, IF/ICC

Host: Rabbit

Datasheet

Version: 3.0.0
Revision date: 13 Jun 2025



Recommended dilutions: WB: 1/1000, IHC-P: 1/10 - 1/50, IF/ICC: 1/10 - 1/50. Not tested in IHC-F. Optimal dilutions/concentrations should be determined by the end user.

Conjugation: Unconjugated

Immunogen: KLH-conjugated synthetic peptide between 586-615 amino acids from human RB1.

Isotype: IgG

Form: Liquid

Purification: Purified through a protein A column, followed by peptide affinity purification.

Storage: Aliquot and store at -20°C. Avoid repeated freeze/thaw cycles.

UniProt Primary AC: P06400 ([UniProt](#), [ExPASy](#))

NCBI Accession: NP_000312.2

KEGG: hsa:5925

String: [9606.ENSP00000267163](#)

Molecular Weight: Calculated MW: 106 kDa

Buffer: PBS containing 0.09% sodium azide.

Note: THIS PRODUCT IS FOR RESEARCH USE ONLY. NOT FOR USE IN DIAGNOSTIC, THERAPEUTIC OR COSMETIC PROCEDURES. NOT FOR HUMAN OR ANIMAL CONSUMPTION.