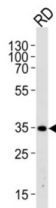
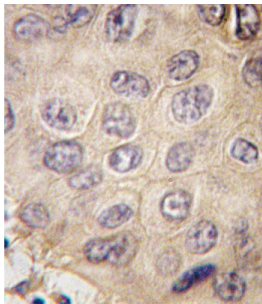
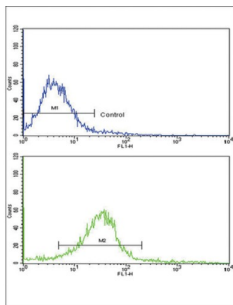


Ectodysplasin-A (EDA) Antibody

Catalogue No.: abx032775



EDA is a type II membrane protein that can be cleaved by furin to produce a secreted form. This protein, which belongs to the tumor necrosis factor family, acts as a homotrimer and may be involved in cell-cell signaling during the development of ectodermal organs. Defects in the gene for EDA are a cause of ectodermal dysplasia, anhidrotic, which is also known as X-linked hypohidrotic ectodermal dysplasia.

Target: Ectodysplasin-A (EDA)

Clonality: Polyclonal

Reactivity: Human

Tested Applications: ELISA, WB, IHC, FCM

Host: Rabbit

Recommended dilutions: WB: 1/1000, IHC-P: 1/10 - 1/50, FCM: 1/10 - 1/50. Not tested in IHC-F. Optimal dilutions/concentrations should be determined by the end user.

Datasheet

Version: 2.0.0
Revision date: 21 May 2025



Conjugation:	Unconjugated
Immunogen:	KLH-conjugated synthetic peptide between 47-76 amino acids from the N-terminal region of human EDA.
Isotype:	IgG
Form:	Liquid
Purification:	Purified through a protein A column, followed by peptide affinity purification.
Storage:	Aliquot and store at -20°C. Avoid repeated freeze/thaw cycles.
UniProt Primary AC:	Q92838 (UniProt , ExPASy)
NCBI Accession:	NP_001005609.1, NP_001005610.2, NP_001005612.2, NP_001005613.1, NP_001390.1
KEGG:	hsa:1896
String:	9606.ENSP00000363680
Molecular Weight:	Calculated MW: 41.3 kDa
Buffer:	PBS containing 0.09% sodium azide.
Specificity:	Predicted to react with Cow EDA.
Note:	THIS PRODUCT IS FOR RESEARCH USE ONLY. NOT FOR USE IN DIAGNOSTIC, THERAPEUTIC OR COSMETIC PROCEDURES. NOT FOR HUMAN OR ANIMAL CONSUMPTION.