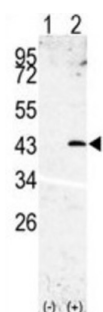


## Signal Peptide Peptidase-Like 3 (SPPL3) Antibody

Catalogue No.: abx032796



Signal peptide peptidase (SPP) is an aspartyl protease that mediates clearance of signal peptides by proteolysis within the endoplasmic reticulum (ER). Like presenilins, SPP contains a critical GXGD motif in its C-terminal catalytic center. SPPL3 is one of several presenilin homologues/SPP-like proteins (PSHs/SPPL) that have been identified.

<b>Target:</b>	Signal Peptide Peptidase-Like 3 (SPPL3)
<b>Clonality:</b>	Polyclonal
<b>Reactivity:</b>	Human
<b>Tested Applications:</b>	ELISA, WB
<b>Host:</b>	Rabbit
<b>Recommended dilutions:</b>	WB: 1/1000. Optimal dilutions/concentrations should be determined by the end user.
<b>Conjugation:</b>	Unconjugated
<b>Immunogen:</b>	KLH-conjugated synthetic peptide between 50-81 amino acids from the N-terminal region of human SPPL3.
<b>Isotype:</b>	IgG
<b>Form:</b>	Liquid
<b>Purification:</b>	Purified through a protein G column, eluted with high and low pH buffers and neutralized immediately, followed by dialysis against PBS.
<b>Storage:</b>	Aliquot and store at -20°C. Avoid repeated freeze/thaw cycles.
<b>UniProt Primary AC:</b>	Q8TCT6 ( <a href="#">UniProt</a> , <a href="#">ExPASy</a> )
<b>KEGG:</b>	hsa:121665

# Datasheet

Version: 3.0.0

Revision date: 15 Aug 2025



**String:** [9606.ENSF00000288680](#)

**Molecular Weight:** Calculated MW: 42.3 kDa

**Buffer:** PBS containing 0.09% sodium azide.

**Note:** THIS PRODUCT IS FOR RESEARCH USE ONLY. NOT FOR USE IN DIAGNOSTIC, THERAPEUTIC OR COSMETIC PROCEDURES. NOT FOR HUMAN OR ANIMAL CONSUMPTION.

For Reference Only