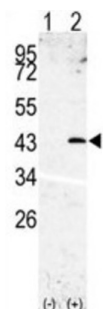


Signal Peptide Peptidase-Like 3 (SPPL3) Antibody

Catalogue No.: abx032796



Signal peptide peptidase (SPP) is an aspartyl protease that mediates clearance of signal peptides by proteolysis within the endoplasmic reticulum (ER). Like presenilins, SPP contains a critical GXGD motif in its C-terminal catalytic center. SPPL3 is one of several presenilin homologues/SPP-like proteins (PSHs/SPPL) that have been identified.

Target:	Signal Peptide Peptidase-Like 3 (SPPL3)
Clonality:	Polyclonal
Reactivity:	Human
Tested Applications:	ELISA, WB
Host:	Rabbit
Recommended dilutions:	WB: 1/1000. Optimal dilutions/concentrations should be determined by the end user.
Conjugation:	Unconjugated
Immunogen:	KLH-conjugated synthetic peptide between 50-81 amino acids from the N-terminal region of human SPPL3.
Isotype:	IgG
Form:	Liquid
Purification:	Purified through a protein G column, eluted with high and low pH buffers and neutralized immediately, followed by dialysis against PBS.
Storage:	Aliquot and store at -20°C. Avoid repeated freeze/thaw cycles.
UniProt Primary AC:	Q8TCT6 (UniProt , ExPASy)
KEGG:	hsa:121665

Datasheet

Version: 3.0.0

Revision date: 06 Mar 2025



String: [9606.ENSF00000288680](#)

Molecular Weight: Calculated MW: 42.3 kDa

Buffer: PBS containing 0.09% sodium azide.

Note: THIS PRODUCT IS FOR RESEARCH USE ONLY. NOT FOR USE IN DIAGNOSTIC, THERAPEUTIC OR COSMETIC PROCEDURES. NOT FOR HUMAN OR ANIMAL CONSUMPTION.

For Reference Only