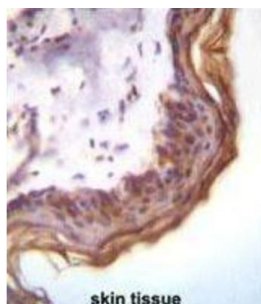


Kallikrein 7 (KLK7) Antibody

Catalogue No.: abx032802



MDA-MB231

55

36

28

17

11

Kallikreins are a subgroup of serine proteases having diverse physiological functions. Growing evidence suggests that many kallikreins are implicated in carcinogenesis and some have potential as novel cancer and other disease biomarkers. The KLK7 enzyme is thought to be involved in the proteolysis of intercellular cohesive structures preceding desquamation, which is the shedding of the outermost layer of the epidermis.

Target: Kallikrein 7 (KLK7)**Clonality:** Polyclonal**Reactivity:** Human**Tested Applications:** ELISA, WB, IHC**Host:** Rabbit**Recommended dilutions:** WB: 1/2000, IHC-P: 1/10 - 1/50. Not tested in IHC-F. Optimal dilutions/concentrations should be determined by the end user.**Conjugation:** Unconjugated**Immunogen:** KLH-conjugated synthetic peptide between 67-97 amino acids from the Central region of human Kallikrein 7.**Isotype:** IgG

Datasheet

Version: 3.0.0

Revision date: 16 Jul 2025



Form:	Liquid
Purification:	Purified through a protein A column, followed by peptide affinity purification.
Storage:	Aliquot and store at -20°C. Avoid repeated freeze/thaw cycles.
UniProt Primary AC:	P49862 (UniProt , ExPASy)
KEGG:	hsa:5650
String:	9606.ENSP00000375683
Molecular Weight:	Calculated MW: 27.5 kDa
Buffer:	PBS containing 0.09% sodium azide.
Note:	THIS PRODUCT IS FOR RESEARCH USE ONLY. NOT FOR USE IN DIAGNOSTIC, THERAPEUTIC OR COSMETIC PROCEDURES. NOT FOR HUMAN OR ANIMAL CONSUMPTION.

For Reference Only