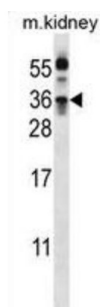
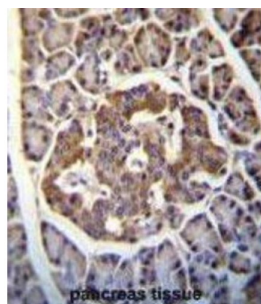


Kallikrein 8 (KLK8) Antibody

Catalogue No.: abx032804



Kallikreins are a subgroup of serine proteases having diverse physiological functions. Growing evidence suggests that many kallikreins are implicated in carcinogenesis and some have potential as novel cancer and other disease biomarkers. There are four different KLK8 isoforms, each exhibiting distinct patterns of expression that suggest roles in brain plasticity and ovarian cancer.

Target: Kallikrein 8 (KLK8)

Clonality: Polyclonal

Reactivity: Mouse

Tested Applications: ELISA, WB, IHC

Host: Rabbit

Recommended dilutions: WB: 1/1000, IHC-P: 1/10 - 1/50. Not tested in IHC-F. Optimal dilutions/concentrations should be determined by the end user.

Conjugation: Unconjugated

Immunogen: KLH-conjugated synthetic peptide between 143-172 amino acids from the Central region of human Kallikrein 8.

Isotype: IgG

Datasheet

Version: 2.0.0

Revision date: 10 Apr 2025



Form:	Liquid
Purification:	Purified through a protein A column, followed by peptide affinity purification.
Storage:	Aliquot and store at -20°C. Avoid repeated freeze/thaw cycles.
UniProt Primary AC:	O60259 (UniProt , ExPASy)
Molecular Weight:	Calculated MW: 28 kDa
Buffer:	PBS containing 0.09% sodium azide.
Note:	THIS PRODUCT IS FOR RESEARCH USE ONLY. NOT FOR USE IN DIAGNOSTIC, THERAPEUTIC OR COSMETIC PROCEDURES. NOT FOR HUMAN OR ANIMAL CONSUMPTION.

For Reference Only