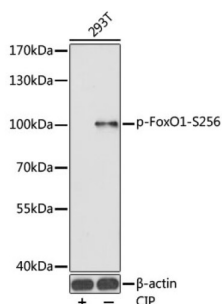
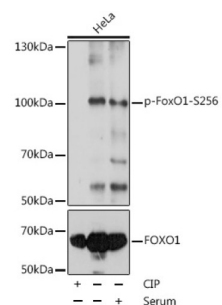


## Forkhead Box Protein O1 Phospho-Ser256 (FOXO1 pS256) Antibody

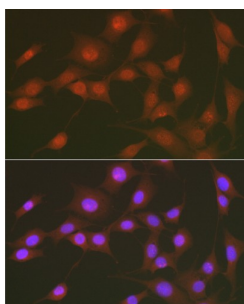
Catalogue No.: abx000224



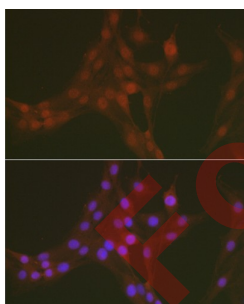
Western blot analysis of lysates from 293T cells, using Phospho-FoxO1-S256 Antibody. 293T were treated by CIP (20 µl CIP for each 400 µl cell lysate) at 37 °C for 1 hour. Secondary antibody: HRP-conjugated Goat anti-Rabbit IgG (H+L) at 1/10000 dilution. Lysates/proteins: 25 µg per lane. Blocking buffer: 3% BSA. Exposure time: 90s.



Western blot analysis of lysates from HeLa cells, using Phospho-FoxO1-S256 Antibody. HeLa cell lysate were treated by CIP (20 µl CIP for each 400 µl cell lysate) at 37 °C for 1 hour or treated by 10% FBS at 37 °C for 30 minutes after serum-starvation overnight. Secondary antibody: HRP-conjugated Goat anti-Rabbit IgG (H+L) at 1/10000 dilution. Lysates/proteins: 25 µg per lane. Blocking buffer: 3% BSA. Exposure time: 2s.



Western blot analysis of lysates from HeLa cells using Phospho-FoxO1-S256 Antibody at 1/1000 dilution. HeLa cells were treated by 10% FBS at 37 °C for 30 minutes after serum-starvation overnight. Secondary antibody: HRP-conjugated Goat anti-Rabbit IgG (H+L) at 1/10000 dilution. Lysates/proteins: 25 µg per lane. Blocking buffer: 3% nonfat dry milk in TBST. Exposure time: 30s.



Immunofluorescence analysis of NIH/3T3 cells using Phospho-FoxO1-S256 Antibody at dilution of 1/50. Secondary antibody: Cy3-conjugated Goat anti-Rabbit IgG (H+L) at 1/500 dilution. Blue: DAPI for nuclear staining.

Forkhead Box Protein O1 Phospho-Ser256 (FOXO1 pS256) Antibody is a Rabbit Polyclonal antibody against Forkhead Box Protein O1 Phospho-Ser256 (FOXO1 pS256). This gene belongs to the forkhead family of transcription factors which are characterized by a distinct forkhead domain. The specific function of this gene has not yet been determined; however, it may play a role in myogenic growth and differentiation. Translocation of this gene with PAX3 has been associated with alveolar rhabdomyosarcoma.

### Target:

Forkhead Box Protein O1 Phospho-Ser256 (FOXO1 pS256)

# Datasheet

Version: 5.0.0  
Revision date: 23 May 2025



<b>Clonality:</b>	Polyclonal
<b>Reactivity:</b>	Human, Mouse, Rat
<b>Tested Applications:</b>	ELISA, WB, IF/ICC
<b>Host:</b>	Rabbit
<b>Recommended dilutions:</b>	ELISA: 1 µg/ml, WB: 1/500 - 1/1000, IF/ICC: 1/50 - 1/200. Optimal dilutions/concentrations should be determined by the end user.
<b>Conjugation:</b>	Unconjugated
<b>Immunogen:</b>	A synthetic phosphorylated peptide around S256 of human FoxO1.
<b>Isotype:</b>	IgG
<b>Form:</b>	Liquid
<b>Purification:</b>	Purified by affinity chromatography.
<b>Storage:</b>	Aliquot and store at -20°C. Avoid repeated freeze/thaw cycles.
<b>UniProt Primary AC:</b>	Q12778 ( <a href="#">UniProt</a> , <a href="#">ExPASy</a> )
<b>Gene Symbol:</b>	FOXO1
<b>GeneID:</b>	<a href="#">2308</a>
<b>NCBI Accession:</b>	NP_002006.2
<b>KEGG:</b>	hsa:2308
<b>String:</b>	<a href="#">9606.ENSP00000368880</a>
<b>Molecular Weight:</b>	Calculated MW: 70 kDa Observed MW: 82 kDa
<b>Buffer:</b>	PBS, pH 7.3, containing 0.05% Proclin-300, 50% glycerol.
<b>Concentration:</b>	> 0.2 mg/ml
<b>Note:</b>	THIS PRODUCT IS FOR RESEARCH USE ONLY. NOT FOR USE IN DIAGNOSTIC, THERAPEUTIC OR COSMETIC PROCEDURES. NOT FOR HUMAN OR ANIMAL CONSUMPTION.