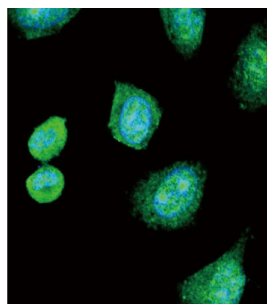


## Albumin (ALB) Antibody

Catalogue No.: abx032860



Albumin is a soluble, monomeric protein which comprises about one-half of the blood serum protein. Albumin functions primarily as a carrier protein for steroids, fatty acids, and thyroid hormones and plays a role in stabilizing extracellular fluid volume. Albumin is a globular unglycosylated serum protein of molecular weight 65, 000. Albumin is synthesized in the liver as prealbumin which has an N-terminal peptide that is removed before the nascent protein is released from the rough endoplasmic reticulum. The product, proalbumin, is in turn cleaved in the Golgi vesicles to produce the secreted albumin.

<b>Target:</b>	Albumin (ALB)
<b>Clonality:</b>	Polyclonal
<b>Reactivity:</b>	Human, Mouse
<b>Tested Applications:</b>	ELISA, WB, IHC, FCM
<b>Host:</b>	Rabbit

# Datasheet

Version: 2.0.0  
Revision date: 14 Oct 2025



**Recommended dilutions:** WB: 1/1000, IHC-P: 1/500, FCM: 1/10 - 1/50. Not tested in IHC-F. Optimal dilutions/concentrations should be determined by the end user.

**Conjugation:** Unconjugated

**Immunogen:** KLH-conjugated synthetic peptide between 540-569 amino acids from the C-terminal region of human ALB.

**Isotype:** IgG

**Form:** Liquid

**Purification:** Purified Rabbit Polyclonal Antibody.

**Storage:** Aliquot and store at -20°C. Avoid repeated freeze/thaw cycles.

**UniProt Primary AC:** P02768 ([UniProt](#), [ExPASy](#))

**NCBI Accession:** NP\_000468.1

**KEGG:** hsa:213

**String:** [9606.ENSP00000295897](#)

**Molecular Weight:** Calculated MW: 69.4 kDa

**Buffer:** PBS containing 0.09% sodium azide.

**Specificity:** Predicted to react with Horse and Monkey ALB.

**Note:** THIS PRODUCT IS FOR RESEARCH USE ONLY. NOT FOR USE IN DIAGNOSTIC, THERAPEUTIC OR COSMETIC PROCEDURES. NOT FOR HUMAN OR ANIMAL CONSUMPTION.