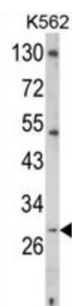
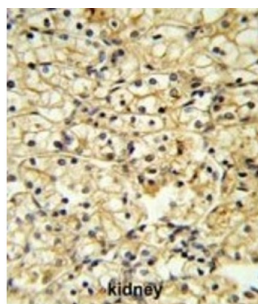
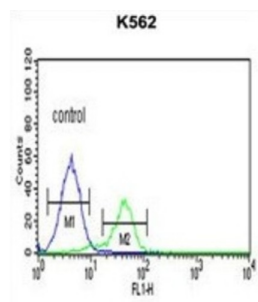


## TNF-Related Activation Protein (TRAP) Antibody

Catalogue No.: abx032863



TRAP is expressed on the surface of T cells. It regulates B cell function by engaging CD40 on the B cell surface. A defect in its gene results in an inability to undergo immunoglobulin class switch and is associated with hyper-IgM syndrome.

**Target:** TNF-Related Activation Protein (TRAP)

**Clonality:** Polyclonal

**Reactivity:** Human

**Tested Applications:** ELISA, WB, IHC, FCM

**Host:** Rabbit

**Recommended dilutions:** WB: 1/1000, IHC-P: 1/50 - 1/100, FCM: 1/10 - 1/50. Not tested in IHC-F. Optimal dilutions/concentrations should be determined by the end user.

# Datasheet

Version: 2.0.0

Revision date: 01 Sep 2025



<b>Conjugation:</b>	Unconjugated
<b>Immunogen:</b>	KLH-conjugated synthetic peptide between 181-207 amino acids from the C-terminal region of human TRAP.
<b>Isotype:</b>	IgG
<b>Form:</b>	Liquid
<b>Purification:</b>	Purified Rabbit Polyclonal Antibody.
<b>Storage:</b>	Aliquot and store at -20°C. Avoid repeated freeze/thaw cycles.
<b>UniProt Primary AC:</b>	P29965 ( <a href="#">UniProt</a> , <a href="#">ExPASy</a> )
<b>KEGG:</b>	hsa:959
<b>String:</b>	<a href="#">9606.ENSP00000359663</a>
<b>Molecular Weight:</b>	Calculated MW: 29.3 kDa
<b>Buffer:</b>	PBS containing 0.09% sodium azide.
<b>Note:</b>	THIS PRODUCT IS FOR RESEARCH USE ONLY. NOT FOR USE IN DIAGNOSTIC, THERAPEUTIC OR COSMETIC PROCEDURES. NOT FOR HUMAN OR ANIMAL CONSUMPTION.