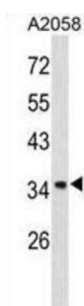
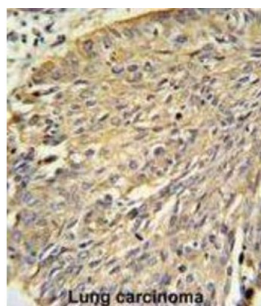
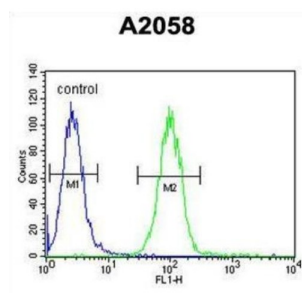


Annexin A1 (ANXA1) Antibody

Catalogue No.: abx032882



Annexin I belongs to a family of Ca (2+) dependent phospholipid binding proteins which have a molecular weight of approximately 35, 000 to 40, 000 and are preferentially located on the cytosolic face of the plasma membrane. Annexin I protein has an apparent relative molecular mass of 40 kDa, with phospholipase A2 inhibitory activity. Since phospholipase A2 is required for the biosynthesis of the potent mediators of inflammation, prostaglandins and leukotrienes, annexin I may have potential anti-inflammatory activity.

Target: Annexin A1 (ANXA1)

Clonality: Polyclonal

Reactivity: Human

Tested Applications: ELISA, WB, IHC, FCM

Host: Rabbit

Datasheet

Version: 3.0.0
Revision date: 14 Oct 2025



Recommended dilutions: WB: 1/1000, IHC-P: 1/50 - 1/100, FCM: 1/10 - 1/50. Not tested in IHC-F. Optimal dilutions/concentrations should be determined by the end user.

Conjugation: Unconjugated

Immunogen: KLH-conjugated synthetic peptide between 129-158 amino acids from the Central region of human Annexin A1.

Isotype: IgG

Form: Liquid

Purification: Purified Rabbit Polyclonal Antibody.

Storage: Aliquot and store at -20°C. Avoid repeated freeze/thaw cycles.

UniProt Primary AC: P04083 ([UniProt](#), [ExPASy](#))

KEGG: hsa:301

String: [9606.ENSP00000366109](#)

Molecular Weight: Calculated MW: 38.7 kDa

Buffer: PBS containing 0.09% sodium azide.

Note: THIS PRODUCT IS FOR RESEARCH USE ONLY. NOT FOR USE IN DIAGNOSTIC, THERAPEUTIC OR COSMETIC PROCEDURES. NOT FOR HUMAN OR ANIMAL CONSUMPTION.