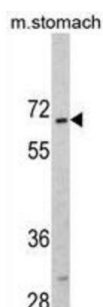
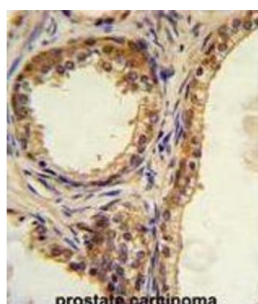
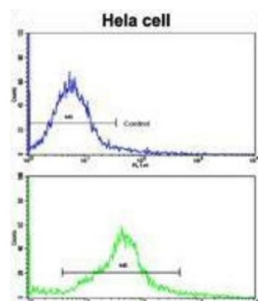


Cyclic AMP-Responsive Element Binding Protein 3 Like Protein 1 (CREB3L1) Antibody

Catalogue No.: abx032888



CREB3L1 is a transcription factor that acts during endoplasmic reticulum stress by activating unfolded protein response target genes. It is specifically involved in ER-stress response in astrocytes in the central nervous system (By similarity). It may play a role in gliosis. *In vitro*, it binds to box-B element, cAMP response element (CRE) and CRE-like sequences, and activates transcription through box-B element but not through CRE.

Target: Cyclic AMP-Responsive Element Binding Protein 3 Like Protein 1 (CREB3L1)

Clonality: Polyclonal

Reactivity: Human, Mouse

Tested Applications: ELISA, WB, IHC, FCM

Host: Rabbit

Datasheet

Version: 3.0.0
Revision date: 29 Jun 2025



Recommended dilutions:	WB: 1/8000, IHC-P: 1/50 - 1/100, FCM: 1/10 - 1/50. Not tested in IHC-F. Optimal dilutions/concentrations should be determined by the end user.
Conjugation:	Unconjugated
Immunogen:	KLH-conjugated synthetic peptide between 481-509 amino acids from the C-terminal region of human CREB3L1.
Isotype:	IgG
Form:	Liquid
Purification:	Purified Rabbit Polyclonal Antibody.
Storage:	Aliquot and store at -20°C. Avoid repeated freeze/thaw cycles.
UniProt Primary AC:	Q96BA8 (UniProt , ExPASy)
Molecular Weight:	Calculated MW: 57 kDa
Buffer:	PBS containing 0.09% sodium azide.
Note:	THIS PRODUCT IS FOR RESEARCH USE ONLY. NOT FOR USE IN DIAGNOSTIC, THERAPEUTIC OR COSMETIC PROCEDURES. NOT FOR HUMAN OR ANIMAL CONSUMPTION.