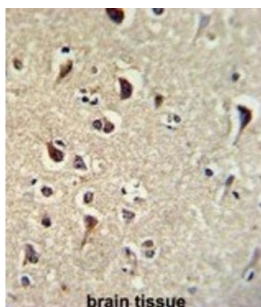
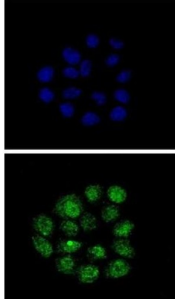


Transforming Growth Factor-Beta-Inducible Early Growth Response Protein 2 (TIEG2) Antibody

Catalogue No.: abx032901



TIEG2 is a transcription factor. The protein activates the epsilon and gamma-globin gene promoters and, to a much lower degree, the beta-globin gene and represses promoters containing SP1-like binding inhibiting cell growth. It represses transcription of SMAD7 which enhances TGF-beta signaling. It induces apoptosis.

Target:	Transforming Growth Factor-Beta-Inducible Early Growth Response Protein 2 (TIEG2)
Clonality:	Polyclonal
Reactivity:	Human
Tested Applications:	ELISA, WB, IHC, IF/ICC, FCM
Host:	Rabbit

Datasheet

Version: 3.0.0
Revision date: 10 Sep 2025



Recommended dilutions: WB: 1/1000, IHC-P: 1/50 - 1/100, IF/ICC: 1/10 - 1/50, FCM: 1/10 - 1/50. Not tested in IHC-F.
Optimal dilutions/concentrations should be determined by the end user.

Conjugation: Unconjugated

Immunogen: KLH-conjugated synthetic peptide between 7-36 amino acids from the N-terminal region of human TIEG2.

Isotype: IgG

Form: Liquid

Purification: Purified Rabbit Polyclonal Antibody.

Storage: Aliquot and store at -20°C. Avoid repeated freeze/thaw cycles.

UniProt Primary AC: O14901 ([UniProt](#), [ExPASy](#))

Gene Symbol: KLF11

KEGG: hsa:8462

String: [9606.ENSP00000307023](#)

Molecular Weight: Calculated MW: 55.1 kDa

Buffer: PBS containing 0.09% sodium azide.

Specificity: Predicted to react with Mouse KLF11.

Note: THIS PRODUCT IS FOR RESEARCH USE ONLY. NOT FOR USE IN DIAGNOSTIC, THERAPEUTIC OR COSMETIC PROCEDURES. NOT FOR HUMAN OR ANIMAL CONSUMPTION.