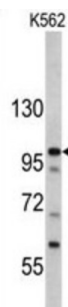
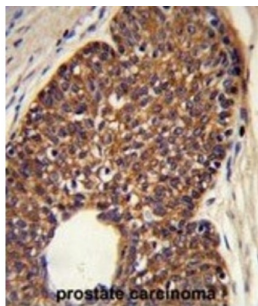
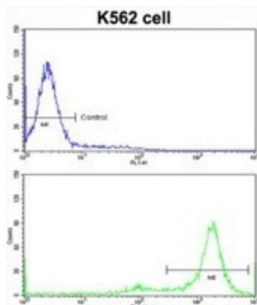


MDM2 Binding Protein (MTBP) Antibody

Catalogue No.: abx032920



MTBP inhibits cell migration in vitro and suppresses the invasive behavior of tumor cells. The protein may play a role in MDM2-dependent TP53/p53 homeostasis in unstressed cells. The protein inhibits autoubiquitination of MDM2, thereby enhancing MDM2 stability. This promotes MDM2-mediated ubiquitination of TP53/p53 and its subsequent degradation.

Target: MDM2 Binding Protein (MTBP)

Clonality: Polyclonal

Reactivity: Human

Tested Applications: ELISA, WB, IHC, FCM

Host: Rabbit

Recommended dilutions: WB: 1/1000, IHC-P: 1/50 - 1/100, FCM: 1/10 - 1/50. Not tested in IHC-F. Optimal dilutions/concentrations should be determined by the end user.

Datasheet

Version: 2.0.0
Revision date: 05 Mar 2025



Conjugation:	Unconjugated
Immunogen:	KLH-conjugated synthetic peptide between 853-881 amino acids from the C-terminal region of human MTBP.
Isotype:	IgG
Form:	Liquid
Purification:	Purified Rabbit Polyclonal Antibody.
Storage:	Aliquot and store at -20°C. Avoid repeated freeze/thaw cycles.
UniProt Primary AC:	Q96DY7 (UniProt , ExPASy)
KEGG:	hsa:27085
String:	9606.ENSP00000303398
Molecular Weight:	Calculated MW: 102 kDa
Buffer:	PBS containing 0.09% sodium azide.
Specificity:	Predicted to react with Mouse MTBP.
Note:	THIS PRODUCT IS FOR RESEARCH USE ONLY. NOT FOR USE IN DIAGNOSTIC, THERAPEUTIC OR COSMETIC PROCEDURES. NOT FOR HUMAN OR ANIMAL CONSUMPTION.