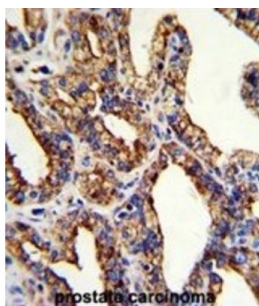


Tumor-Associated Calcium Signal Transducer 2 (TROP2) Antibody

Catalogue No.: abx032931



WB analysis of HL60 cell line lysates



IHC-P analysis of human prostate carcinoma tissue, with DAB staining.

TROP2 is a carcinoma-associated antigen defined by the monoclonal antibody GA733. This antigen is a member of a family including at least two type I membrane proteins. It transduces an intracellular calcium signal and acts as a cell surface receptor. Mutations of its gene result in gelatinous drop-like corneal dystrophy, an autosomal recessive disorder characterized by severe corneal amyloidosis leading to blindness.

Target: Tumor-Associated Calcium Signal Transducer 2 (TROP2)

Clonality: Polyclonal

Reactivity: Human

Tested Applications: ELISA, WB, IHC

Host: Rabbit

Recommended dilutions: WB: 1/1000, IHC-P: 1/50 - 1/100. Not tested in IHC-F. Optimal dilutions/concentrations should be determined by the end user.

Conjugation: Unconjugated

Immunogen: KLH-conjugated synthetic peptide between 162-190 amino acids from the Central region of human TROP2.

Isotype: IgG

Datasheet

Version: 3.0.0

Revision date: 31 Aug 2025



Form:	Liquid
Purification:	Purified by Saturated Ammonium Sulfate (SAS) precipitation followed by dialysis against PBS.
Storage:	Aliquot and store at -20°C. Avoid repeated freeze/thaw cycles.
UniProt Primary AC:	P09758 (UniProt , ExPASy)
KEGG:	hsa:4070
String:	9606.ENSP00000360269
Molecular Weight:	Calculated MW: 35.7 kDa
Buffer:	PBS containing 0.09% sodium azide.
Note:	THIS PRODUCT IS FOR RESEARCH USE ONLY. NOT FOR USE IN DIAGNOSTIC, THERAPEUTIC OR COSMETIC PROCEDURES. NOT FOR HUMAN OR ANIMAL CONSUMPTION.

For Reference Only