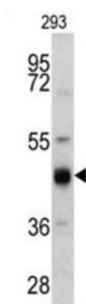
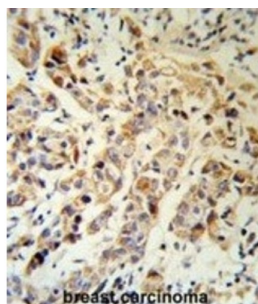
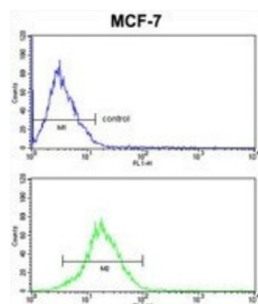


Keratin 13 (KRT13) Antibody

Catalogue No.: abx032946



KRT13 is a member of the keratin gene family. The keratins are intermediate filament proteins responsible for the structural integrity of epithelial cells and are subdivided into cytokeratins and hair keratins. Most of the type I cytokeratins consist of acidic proteins which are arranged in pairs of heterotypic keratin chains. This type I cytokeratin is paired with keratin 4 and expressed in the suprabasal layers of non-cornified stratified epithelia. Mutations in its gene and keratin 4 have been associated with the autosomal dominant disorder White Sponge Nevus.

Target:	Keratin 13 (KRT13)
Clonality:	Polyclonal
Reactivity:	Human
Tested Applications:	ELISA, WB, IHC, FCM
Host:	Rabbit

Datasheet

Version: 2.0.0
Revision date: 29 Jun 2025



Recommended dilutions: WB: 1/1000, IHC-P: 1/50 - 1/100, FCM: 1/10 - 1/50. Not tested in IHC-F. Optimal dilutions/concentrations should be determined by the end user.

Conjugation: Unconjugated

Immunogen: KLH-conjugated synthetic peptide between 106-138 amino acids from the N-terminal region of human KRT13.

Isotype: IgG

Form: Liquid

Purification: Purified Rabbit Polyclonal Antibody.

Storage: Aliquot and store at -20°C. Avoid repeated freeze/thaw cycles.

UniProt Primary AC: P13646 ([UniProt](#), [ExPASy](#))

Gene Symbol: KRT13

GeneID: [3860](#)

OMIM: [148065](#)

NCBI Accession: NP_002265.2

HGNC: 6415

KEGG: hsa:3860

Ensembl: ENSG00000171401

String: [9606.ENSP00000246635](#)

Molecular Weight: Calculated MW: 49.6 kDa

Buffer: PBS containing 0.09% sodium azide.

Note: THIS PRODUCT IS FOR RESEARCH USE ONLY. NOT FOR USE IN DIAGNOSTIC, THERAPEUTIC OR COSMETIC PROCEDURES. NOT FOR HUMAN OR ANIMAL CONSUMPTION.