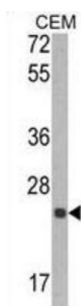
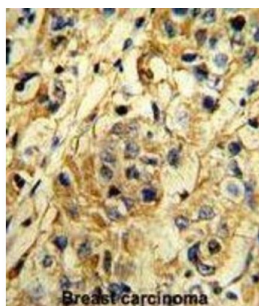
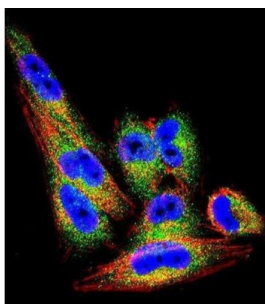


Metalloproteinase Inhibitor 1 (TIMP1) Antibody

Catalogue No.: abx032947



TIMP1 belongs to the TIMP family. The proteins in this family are natural inhibitors of the matrix metalloproteinases (MMPs), a group of peptidases involved in degradation of the extracellular matrix. In addition to its inhibitory role against most of the known MMPs, the protein is able to promote cell proliferation in a wide range of cell types, and may also have an anti-apoptotic function.

Target: Metalloproteinase Inhibitor 1 (TIMP1)

Clonality: Polyclonal

Reactivity: Human

Tested Applications: ELISA, WB, IHC, IF/ICC, FCM

Host: Rabbit

Recommended dilutions: WB: 1/1000, IHC-P: 1/10 - 1/50, IF/ICC: 1/10 - 1/50, FCM: 1/10 - 1/50. Not tested in IHC-F. Optimal dilutions/concentrations should be determined by the end user.

Datasheet

Version: 2.0.0
Revision date: 26 Sep 2025



Conjugation:	Unconjugated
Immunogen:	KLH-conjugated synthetic peptide between 41-70 amino acids from the N-terminal region of human TIMP1.
Isotype:	IgG
Form:	Liquid
Purification:	Purified Rabbit Polyclonal Antibody.
Storage:	Aliquot and store at -20°C. Avoid repeated freeze/thaw cycles.
UniProt Primary AC:	P01033 (UniProt , ExPASy)
NCBI Accession:	NP_003245.1
KEGG:	hsa:7076
String:	9606.ENSP00000218388
Molecular Weight:	Calculated MW: 23.2 kDa
Buffer:	PBS containing 0.09% sodium azide.
Note:	THIS PRODUCT IS FOR RESEARCH USE ONLY. NOT FOR USE IN DIAGNOSTIC, THERAPEUTIC OR COSMETIC PROCEDURES. NOT FOR HUMAN OR ANIMAL CONSUMPTION.