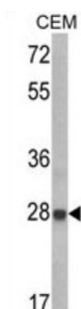
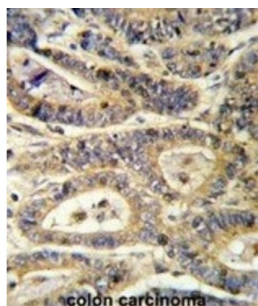
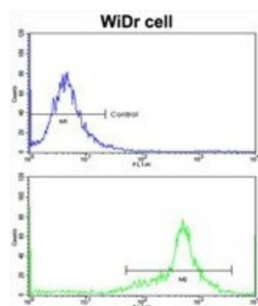


Insulin Like Growth Factor Binding Protein 6 (IGFBP6) Antibody

Catalogue No.: abx032976



Insulin Like Growth Factor Binding Protein 6 (IGFBP6) (IGF binding protein 6) is a member of the IGFBP family that regulates the actions of IGFs. It acts extracellularly in an autocrine/paracrine manner. Insulin Like Growth Factor Binding Protein 6 (IGFBP6) binds preferentially to IGF-II. Insulin Like Growth Factor Binding Protein 6 (IGFBP6) has been shown to inhibit the growth of tumour cells and to promote apoptosis.

Target: Insulin Like Growth Factor Binding Protein 6 (IGFBP6)

Clonality: Polyclonal

Reactivity: Human

Tested Applications: ELISA, WB, IHC, FCM

Host: Rabbit

Recommended dilutions: WB: 1/1000, IHC-P: 1/50 - 1/100, FCM: 1/10 - 1/50. Not tested in IHC-F. Optimal dilutions/concentrations should be determined by the end user.

Datasheet

Version: 3.0.0
Revision date: 06 Jun 2025



Conjugation:	Unconjugated
Immunogen:	KLH-conjugated synthetic peptide between 176-200 amino acids from the C-terminal region of human IGFBP6.
Isotype:	IgG
Form:	Liquid
Purification:	Purified Rabbit Polyclonal Antibody.
Storage:	Aliquot and store at -20°C. Avoid repeated freeze/thaw cycles.
UniProt Primary AC:	P24592 (UniProt , ExPASy)
KEGG:	hsa:3489
String:	9606.ENSP00000301464
Molecular Weight:	Calculated MW: 25.3 kDa
Buffer:	PBS containing 0.09% sodium azide.
Specificity:	Predicted to react with Cow IGFBP6.
Note:	THIS PRODUCT IS FOR RESEARCH USE ONLY. NOT FOR USE IN DIAGNOSTIC, THERAPEUTIC OR COSMETIC PROCEDURES. NOT FOR HUMAN OR ANIMAL CONSUMPTION.