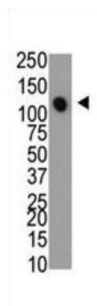
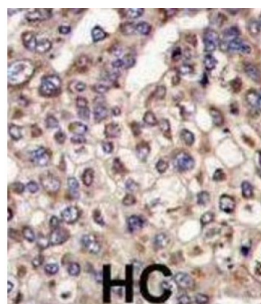


Myotubularin Related Protein 4 (MTMR4) Antibody

Catalogue No.: abx032996



MTMR, a member of the myotubularin family, encodes an intracellular protein of 1,195 amino acids, and shares approximately 47% sequence identity with MTMR3, spiking to over 70% identity in the catalytic domain and the double zinc finger (FYVE) motif. PCR analysis detects expression of MTMR4 in all human tissues examined except lung, small intestine, stomach, salivary gland, adrenal gland, and uterus. Subcellular localization of MTMR4 in transfected HeLa cells showed a perinuclear distribution, similar to that seen with MTMR3. MTMR4 dephosphorylates para-nitrophenylphosphate and phosphatidylinositol 3-phosphate.

Target: Myotubularin Related Protein 4 (MTMR4)

Clonality: Polyclonal

Reactivity: Human, Mouse

Tested Applications: ELISA, WB, IHC

Host: Rabbit

Recommended dilutions: WB: 1/1000, IHC-P: 1/10 - 1/50. Not tested in IHC-F. Optimal dilutions/concentrations should be determined by the end user.

Conjugation: Unconjugated

Immunogen: KLH-conjugated synthetic peptide between 1155-1187 amino acids from the C-terminal region of human MTMR4.

Isotype: IgG

Datasheet

Version: 1.0.0
Revision date: 28 Jun 2025



Form:	Liquid
Purification:	Purified through a protein G column, eluted with high and low pH buffers and neutralized immediately, followed by dialysis against PBS.
Storage:	Aliquot and store at -20°C. Avoid repeated freeze/thaw cycles.
UniProt Primary AC:	Q9NYA4 (UniProt , ExPASy)
NCBI Accession:	NP_004678.3
String:	9606.ENSP00000325285
Molecular Weight:	Calculated MW: 133 kDa
Buffer:	PBS containing 0.09% sodium azide.
Note:	THIS PRODUCT IS FOR RESEARCH USE ONLY. NOT FOR USE IN DIAGNOSTIC, THERAPEUTIC OR COSMETIC PROCEDURES. NOT FOR HUMAN OR ANIMAL CONSUMPTION.

For Reference Only