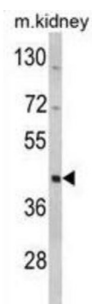


WD Repeat And SOCS Box-Containing Protein 2 (WSB2) Antibody

Catalogue No.: abx033017



WSB2 is a member of the WD-protein subfamily. This protein contains five WD-repeats spanning most of the protein and an SOCS box in the C-terminus. The SOCS box may act as a bridge between specific substrate-binding domains and E3 ubiquitin protein ligases.

Target: WD Repeat And SOCS Box-Containing Protein 2 (WSB2)

Clonality: Polyclonal

Reactivity: Human

Tested Applications: ELISA, WB

Host: Rabbit

Recommended dilutions: WB: 1/1000. Optimal dilutions/concentrations should be determined by the end user.

Conjugation: Unconjugated

Immunogen: KLH-conjugated synthetic peptide between 375-404 amino acids from the C-terminal region of human WSB2.

Isotype: IgG

Form: Liquid

Purification: Purified Rabbit Polyclonal Antibody.

Storage: Aliquot and store at -20°C. Avoid repeated freeze/thaw cycles.

UniProt Primary AC: Q9NYS7 ([UniProt](#), [ExPASy](#))

String: [9606.ENSP00000409131](#)

Datasheet

Version: 4.0.0

Revision date: 02 May 2025



Molecular Weight: Calculated MW: 45.3 kDa

Buffer: PBS containing 0.09% sodium azide.

Specificity: Predicted to react with Mouse and Cow WSB2.

Note: THIS PRODUCT IS FOR RESEARCH USE ONLY. NOT FOR USE IN DIAGNOSTIC, THERAPEUTIC OR COSMETIC PROCEDURES. NOT FOR HUMAN OR ANIMAL CONSUMPTION.

For Reference Only