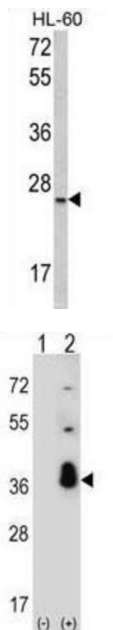
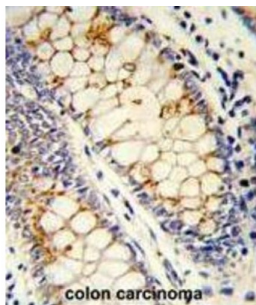


Serine/arginine-Rich Splicing Factor 1 (SFRS1) Antibody

Catalogue No.: abx033023



SFRS1 is a member of the arginine/serine-rich splicing factor protein family, and functions in both constitutive and alternative pre-mRNA splicing. The protein binds to pre-mRNA transcripts and components of the spliceosome, and can either activate or repress splicing depending on the location of the pre-mRNA binding site. The protein's ability to activate splicing is regulated by phosphorylation and interactions with other splicing factor associated proteins.

Target: Serine/arginine-Rich Splicing Factor 1 (SFRS1)

Clonality: Polyclonal

Reactivity: Human

Tested Applications: ELISA, WB, IHC, FCM

Host: Rabbit

Recommended dilutions: WB: 1/1000, IHC-P: 1/50 - 1/100, FCM: 1/10 - 1/50. Not tested in IHC-F. Optimal dilutions/concentrations should be determined by the end user.

Datasheet

Version: 3.0.0
Revision date: 31 Jul 2025



| | |
|----------------------------|--------------------------------------------------------------------------------------------------------------------------------------------|
| Conjugation: | Unconjugated |
| Immunogen: | KLH-conjugated synthetic peptide between 158-186 amino acids from the C-terminal region of human SFRS1. |
| Isotype: | IgG |
| Form: | Liquid |
| Purification: | Purified Rabbit Polyclonal Antibody. |
| Storage: | Aliquot and store at -20°C. Avoid repeated freeze/thaw cycles. |
| UniProt Primary AC: | Q07955 (UniProt , ExPASy) |
| KEGG: | hsa:6426 |
| String: | 9606.ENSP00000258962 |
| Molecular Weight: | Calculated MW: 27.7 kDa |
| Buffer: | PBS containing 0.09% sodium azide. |
| Specificity: | Predicted to react with Mouse, Cow, Pig and Zebrafish SRSF1. |
| Note: | THIS PRODUCT IS FOR RESEARCH USE ONLY. NOT FOR USE IN DIAGNOSTIC, THERAPEUTIC OR COSMETIC PROCEDURES. NOT FOR HUMAN OR ANIMAL CONSUMPTION. |