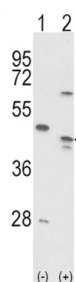
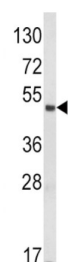
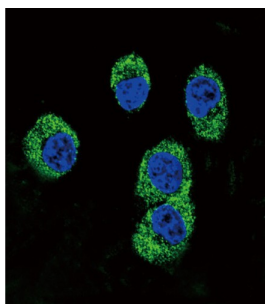


## MAPK/MAK/MRK Overlapping Kinase (MOK) Antibody

Catalogue No.: abx033057



RAGE is able to phosphorylate several exogenous substrates and to undergo autophosphorylation.

**Target:** MAPK/MAK/MRK Overlapping Kinase (MOK)

**Clonality:** Polyclonal

**Reactivity:** Human

**Tested Applications:** ELISA, WB, IF/ICC

**Host:** Rabbit

**Recommended dilutions:** WB: 1/1000, IF/ICC: 1/10 - 1/50. Optimal dilutions/concentrations should be determined by the end user.

**Conjugation:** Unconjugated

# Datasheet

Version: 2.0.0

Revision date: 19 Aug 2025



<b>Immunogen:</b>	KLH-conjugated synthetic peptide between 206-234 amino acids from the Central region of human RAGE.
<b>Isotype:</b>	IgG
<b>Form:</b>	Liquid
<b>Purification:</b>	Purified through a protein A column, followed by peptide affinity purification.
<b>Storage:</b>	Aliquot and store at -20°C. Avoid repeated freeze/thaw cycles.
<b>UniProt Primary AC:</b>	Q9UQ07 ( <a href="#">UniProt</a> , <a href="#">ExPASy</a> )
<b>Gene Symbol:</b>	MOK
<b>String:</b>	<a href="#">9606.ENSP00000355304</a>
<b>Molecular Weight:</b>	Calculated MW: 48 kDa
<b>Buffer:</b>	PBS containing 0.09% sodium azide.
<b>Note:</b>	THIS PRODUCT IS FOR RESEARCH USE ONLY. NOT FOR USE IN DIAGNOSTIC, THERAPEUTIC OR COSMETIC PROCEDURES. NOT FOR HUMAN OR ANIMAL CONSUMPTION.

For Reference Only