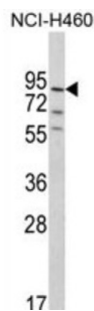
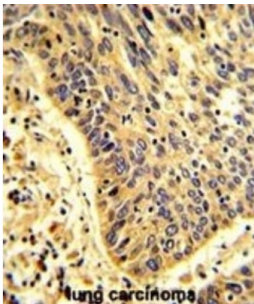
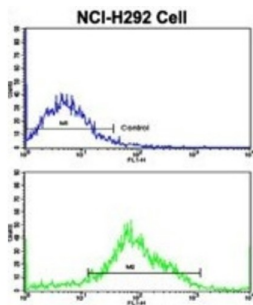


## MyoGEF Antibody

Catalogue No.: abx033067



Guanine nucleotide exchange factor activating the small GTPase RHOA, which, in turn, induces myosin filament formation. It also activates RHOG and does not activate RAC1, or to a much lower extent than RHOA and RHOG. Its part of a functional unit, involving PLEKHG6, MYH10 and RHOA, at the cleavage furrow to advance furrow ingression during cytokinesis. In epithelial cells, It is required for the formation of microvilli and membrane ruffles on the apical pole. Along with EZR, it is required for normal macropinocytosis.

<b>Target:</b>	MyoGEF
<b>Clonality:</b>	Polyclonal
<b>Reactivity:</b>	Human
<b>Tested Applications:</b>	ELISA, WB, IHC, FCM
<b>Host:</b>	Rabbit

# Datasheet

Version: 2.0.0  
Revision date: 22 Jun 2025



**Recommended dilutions:** WB: 1/1000, IHC-P: 1/50 - 1/100, FCM: 1/10 - 1/50. Not tested in IHC-F. Optimal dilutions/concentrations should be determined by the end user.

**Conjugation:** Unconjugated

**Immunogen:** KLH-conjugated synthetic peptide between 60-87 amino acids from the N-terminal region of human MyoGEF.

**Isotype:** IgG

**Form:** Liquid

**Purification:** Purified through a protein A column, followed by peptide affinity purification.

**Storage:** Aliquot and store at -20°C. Avoid repeated freeze/thaw cycles.

**UniProt Primary AC:** Q3KR16 ([UniProt](#), [ExPASy](#))

**KEGG:** hsa:55200

**String:** [9606.ENSP00000380185](#)

**Molecular Weight:** Calculated MW: 89 kDa

**Buffer:** PBS containing 0.09% sodium azide.

**Note:** THIS PRODUCT IS FOR RESEARCH USE ONLY. NOT FOR USE IN DIAGNOSTIC, THERAPEUTIC OR COSMETIC PROCEDURES. NOT FOR HUMAN OR ANIMAL CONSUMPTION.