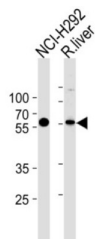
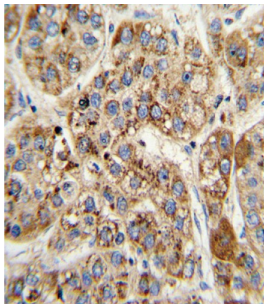
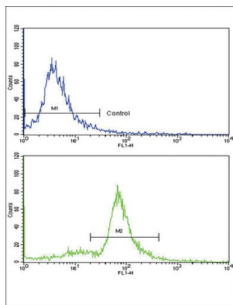


## Methylcrotonoyl-CoA Carboxylase 2 (MCCC2) Antibody

Catalogue No.: abx033068



MCCC2 is the small subunit of 3-methylcrotonyl-CoA carboxylase. This enzyme functions as a heterodimer and catalyzes the carboxylation of 3-methylcrotonyl-CoA to form 3-methylglutaconyl-CoA.

**Target:** Methylcrotonoyl-CoA Carboxylase 2 (MCCC2)

**Clonality:** Polyclonal

**Reactivity:** Human, Rat

**Tested Applications:** ELISA, WB, IHC, FCM

**Host:** Rabbit

**Recommended dilutions:** WB: 1/1000, IHC-P: 1/10 - 1/50, FCM: 1/10 - 1/50. Not tested in IHC-F. Optimal dilutions/concentrations should be determined by the end user.

# Datasheet

Version: 1.0.0  
Revision date: 27 Jun 2025



<b>Conjugation:</b>	Unconjugated
<b>Immunogen:</b>	KLH-conjugated synthetic peptide between 163-189 amino acids from the Central region of human MCCC2.
<b>Isotype:</b>	IgG
<b>Form:</b>	Liquid
<b>Purification:</b>	Purified through a protein A column, followed by peptide affinity purification.
<b>Storage:</b>	Aliquot and store at -20°C. Avoid repeated freeze/thaw cycles.
<b>UniProt Primary AC:</b>	Q9HCC0 ( <a href="#">UniProt</a> , <a href="#">ExPASy</a> )
<b>Gene Symbol:</b>	MCCC2
<b>NCBI Accession:</b>	NP_071415.1
<b>String:</b>	<a href="#">9606.ENSP00000343657</a>
<b>Molecular Weight:</b>	Calculated MW: 61.3 kDa
<b>Buffer:</b>	PBS containing 0.09% sodium azide.
<b>Note:</b>	THIS PRODUCT IS FOR RESEARCH USE ONLY. NOT FOR USE IN DIAGNOSTIC, THERAPEUTIC OR COSMETIC PROCEDURES. NOT FOR HUMAN OR ANIMAL CONSUMPTION.