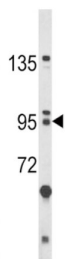
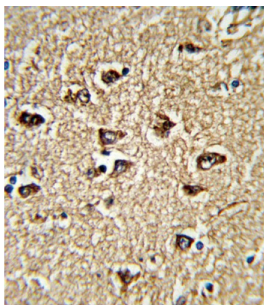


Protein Bicaudal C Homolog 1 (BICC1) Antibody

Catalogue No.: abx033092



BICC1 is an RNA-binding protein that is active in regulating gene expression by modulating protein translation during embryonic development. Mouse studies identified the corresponding protein to be under strict control during cell differentiation and to be a maternally provided gene product.

Target: Protein Bicaudal C Homolog 1 (BICC1)

Clonality: Polyclonal

Reactivity: Human

Tested Applications: ELISA, WB, IHC

Host: Rabbit

Recommended dilutions: WB: 1/1000, IHC-P: 1/10 - 1/50. Not tested in IHC-F. Optimal dilutions/concentrations should be determined by the end user.

Conjugation: Unconjugated

Immunogen: KLH-conjugated synthetic peptide between 80-107 amino acids from the N-terminal region of human BICC1.

Isotype: IgG

Form: Liquid

Datasheet

Version: 6.0.0
Revision date: 14 Aug 2025



Purification:	Purified through a protein A column, followed by peptide affinity purification.
Storage:	Aliquot and store at -20°C. Avoid repeated freeze/thaw cycles.
UniProt Primary AC:	Q9H694 (UniProt , ExPASy)
Gene Symbol:	BICC1
String:	9606.ENSP00000362993
Molecular Weight:	Calculated MW: 105 kDa
Buffer:	PBS containing 0.09% sodium azide.
Specificity:	Predicted to react with Mouse and Xenopus BICC1.
Note:	THIS PRODUCT IS FOR RESEARCH USE ONLY. NOT FOR USE IN DIAGNOSTIC, THERAPEUTIC OR COSMETIC PROCEDURES. NOT FOR HUMAN OR ANIMAL CONSUMPTION.

For Reference Only