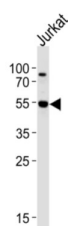
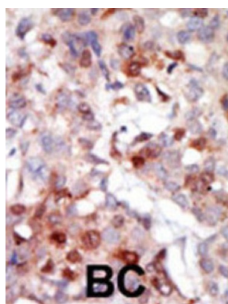


RAC-Gamma Serine/threonine-Protein Kinase (AKT3) Antibody

Catalogue No.: abx033131



AKT3 is a member of the AKT, also called PKB, serine/threonine protein kinase family. AKT kinases are known to be regulators of cell signaling in response to insulin and growth factors. They are involved in a wide variety of biological processes including cell proliferation, differentiation, apoptosis, tumorigenesis, as well as glycogen synthesis and glucose uptake. This kinase has been shown to be stimulated by platelet-derived growth factor (PDGF), insulin, and insulin-like growth factor 1 (IGF1).

Target:	RAC-Gamma Serine/threonine-Protein Kinase (AKT3)
Clonality:	Polyclonal
Reactivity:	Human, Mouse, Rat, Monkey
Tested Applications:	ELISA, WB, IHC
Host:	Rabbit
Recommended dilutions:	WB: 1/1000, IHC-P: 1/50 - 1/100. Not tested in IHC-F. Optimal dilutions/concentrations should be determined by the end user.
Conjugation:	Unconjugated
Immunogen:	KLH-conjugated synthetic peptide between 88-118 amino acids from the Central region of human AKT3.
Isotype:	IgG

Datasheet

Version: 2.0.0

Revision date: 17 Aug 2025



Form:	Liquid
Purification:	Purified through a protein G column, eluted with high and low pH buffers and neutralized immediately, followed by dialysis against PBS.
Storage:	Aliquot and store at -20°C. Avoid repeated freeze/thaw cycles.
UniProt Primary AC:	Q9Y243 (UniProt , ExPASy)
String:	9606.ENSP00000263826
Enzyme Commission Number:	EC 2.7.11.1, EC 2.7.11
Molecular Weight:	Calculated MW: 55.8 kDa
Buffer:	PBS containing 0.09% sodium azide.
Note:	THIS PRODUCT IS FOR RESEARCH USE ONLY. NOT FOR USE IN DIAGNOSTIC, THERAPEUTIC OR COSMETIC PROCEDURES. NOT FOR HUMAN OR ANIMAL CONSUMPTION.

For Reference Only