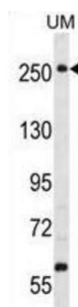
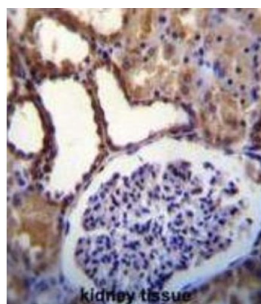


## WNK Lysine Deficient Protein Kinase 3 (WNK3) Antibody

Catalogue No.: abx033148



Members of the 'with no lysine' (WNK) kinase family, such as WNK3, are serine-threonine protein kinases that lack the almost invariant catalytic lysine in subdomain II, which is important for binding ATP in the catalytic site. Instead, these kinases have a conserved lysine in subdomain I that is thought to provide this function (Holden et al., 2004 [PubMed 15194194]).[supplied by OMIM].

**Target:** WNK Lysine Deficient Protein Kinase 3 (WNK3)

**Clonality:** Polyclonal

**Reactivity:** Human

**Tested Applications:** ELISA, WB, IHC

**Host:** Rabbit

**Recommended dilutions:** WB: 1/1000, IHC-P: 1/10 - 1/50. Not tested in IHC-F. Optimal dilutions/concentrations should be determined by the end user.

**Conjugation:** Unconjugated

**Immunogen:** KLH-conjugated synthetic peptide between 1586-1616 amino acids from the C-terminal region of human WNK3 (PRKWNK3).

**Isotype:** IgG

# Datasheet

Version: 3.0.0

Revision date: 22 Aug 2025



<b>Form:</b>	Liquid
<b>Purification:</b>	Purified through a protein A column, followed by peptide affinity purification.
<b>Storage:</b>	Aliquot and store at -20°C. Avoid repeated freeze/thaw cycles.
<b>UniProt Primary AC:</b>	Q9BYP7 ( <a href="#">UniProt</a> , <a href="#">ExPASy</a> )
<b>Gene Symbol:</b>	WNK3
<b>String:</b>	<a href="#">9606.ENSP00000346667</a>
<b>Molecular Weight:</b>	Calculated MW: 198 kDa
<b>Buffer:</b>	PBS containing 0.09% sodium azide.
<b>Note:</b>	THIS PRODUCT IS FOR RESEARCH USE ONLY. NOT FOR USE IN DIAGNOSTIC, THERAPEUTIC OR COSMETIC PROCEDURES. NOT FOR HUMAN OR ANIMAL CONSUMPTION.

For Reference Only