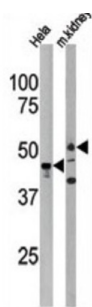
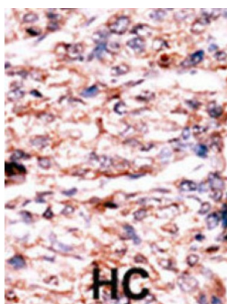


Serine/threonine-Protein Kinase H1 (PSKH1) Antibody

Catalogue No.: abx033212



PSKH1 may be a SFC-associated serine kinase (splicing factor compartment-associated serine kinase) with a role in intranuclear SR protein (non-snRNP splicing factors containing a serine/arginine-rich domain) trafficking and pre-mRNA processing. PSKH1 is localized in the Brefeldin A-sensitive Golgi compartment, at centrosomes, in the nucleus with a somewhat speckle-like presence, membrane-associated to the endoplasmic reticulum (ER) and the plasma membrane (PM), and more diffusely in the cytoplasm.

Target: Serine/threonine-Protein Kinase H1 (PSKH1)

Clonality: Polyclonal

Reactivity: Human

Tested Applications: ELISA, WB, IHC

Host: Rabbit

Recommended dilutions: WB: 1/1000, IHC-P: 1/50 - 1/100. Not tested in IHC-F. Optimal dilutions/concentrations should be determined by the end user.

Conjugation: Unconjugated

Immunogen: KLH-conjugated synthetic peptide between 55-91 amino acids from the N-terminal region of human PSKH1.

Isotype: IgG

Datasheet

Version: 3.0.0

Revision date: 05 Aug 2025



Form:	Liquid
Purification:	Purified Rabbit Polyclonal Antibody.
Storage:	Aliquot and store at -20°C. Avoid repeated freeze/thaw cycles.
UniProt Primary AC:	P11801 (UniProt , ExPASy)
KEGG:	hsa:5681
String:	9606.ENSP00000291041
Molecular Weight:	Calculated MW: 48 kDa
Buffer:	PBS containing 0.09% sodium azide.
Specificity:	Predicted to react with Cow PSKH1.
Note:	THIS PRODUCT IS FOR RESEARCH USE ONLY. NOT FOR USE IN DIAGNOSTIC, THERAPEUTIC OR COSMETIC PROCEDURES. NOT FOR HUMAN OR ANIMAL CONSUMPTION.

For Reference Only