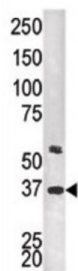


## Twinfilin-2 (TWF2) Antibody

Catalogue No.: abx033213



The protein encoded by this gene was identified by its interaction with the catalytic domain of protein kinase C-zeta. The encoded protein contains an actin-binding site and an ATP-binding site. It is most closely related to twinfilin (PTK9), a conserved actin monomer-binding protein.

**Target:** Twinfilin-2 (TWF2)

**Clonality:** Polyclonal

**Reactivity:** Human

**Tested Applications:** ELISA, WB

**Host:** Rabbit

**Recommended dilutions:** WB: 1/1000. Optimal dilutions/concentrations should be determined by the end user.

**Conjugation:** Unconjugated

**Immunogen:** KLH-conjugated synthetic peptide between 320-349 amino acids from the C-terminal region of human Twinfilin-2 (PTK9L).

**Isotype:** IgG

**Form:** Liquid

**Purification:** Purified through a protein G column, eluted with high and low pH buffers and neutralized immediately, followed by dialysis against PBS.

**Storage:** Aliquot and store at -20°C. Avoid repeated freeze/thaw cycles.

**UniProt Primary AC:** Q6IBS0 ([UniProt](#), [ExPASy](#))

**NCBI Accession:** NP\_009215.1

# Datasheet

Version: 2.0.0

Revision date: 29 Aug 2025



**KEGG:** hsa:11344

**String:** [9606.ENSP00000303908](#)

**Molecular Weight:** Calculated MW: 39.5 kDa

**Buffer:** PBS containing 0.09% sodium azide.

**Note:** THIS PRODUCT IS FOR RESEARCH USE ONLY. NOT FOR USE IN DIAGNOSTIC, THERAPEUTIC OR COSMETIC PROCEDURES. NOT FOR HUMAN OR ANIMAL CONSUMPTION.

For Reference Only