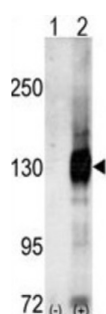
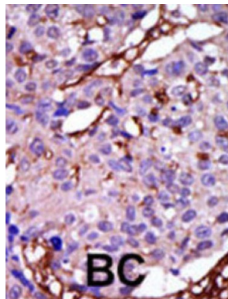


Calcium/Calmodulin Dependent Serine Protein Kinase (CASK) Antibody

Catalogue No.: abx033234



Protein kinases are enzymes that transfer a phosphate group from a phosphate donor, generally the γ phosphate of ATP, onto an acceptor amino acid in a substrate protein. By this basic mechanism, protein kinases mediate most of the signal transduction in eukaryotic cells, regulating cellular metabolism, transcription, cell cycle progression, cytoskeletal rearrangement and cell movement, apoptosis, and differentiation. With more than 500 gene products, the protein kinase family is one of the largest families of proteins in eukaryotes. The family has been classified in 8 major groups based on sequence comparison of their tyrosine (PTK) or serine/threonine (STK) kinase catalytic domains. The calcium/calmodulin-dependent kinase (CAMK) group consists of 75 kinases regulated by Ca^{2+} /CaM and close relative family (CAMK, CAMKL, DAPK, MAPKAPK).

Target: Calcium/Calmodulin Dependent Serine Protein Kinase (CASK)

Clonality: Polyclonal

Reactivity: Human, Mouse

Tested Applications: ELISA, WB, IHC

Host: Rabbit

Recommended dilutions: WB: 1/1000, IHC-P: 1/50 - 1/100. Not tested in IHC-F. Optimal dilutions/concentrations should be determined by the end user.

Conjugation: Unconjugated

Immunogen: KLH-conjugated synthetic peptide between 564-596 amino acids from the C-terminal region of human CASK.

Datasheet

Version: 2.0.0

Revision date: 13 Aug 2025



Isotype:	IgG
Form:	Liquid
Purification:	Purified through a protein G column, eluted with high and low pH buffers and neutralized immediately, followed by dialysis against PBS.
Storage:	Aliquot and store at -20°C. Avoid repeated freeze/thaw cycles.
UniProt Primary AC:	O14936 (UniProt , ExPASy)
Gene Symbol:	CASK
Molecular Weight:	Calculated MW: 105 kDa
Buffer:	PBS containing 0.09% sodium azide.
Specificity:	Predicted to react with Rat CASK.
Note:	THIS PRODUCT IS FOR RESEARCH USE ONLY. NOT FOR USE IN DIAGNOSTIC, THERAPEUTIC OR COSMETIC PROCEDURES. NOT FOR HUMAN OR ANIMAL CONSUMPTION.

For Reference Only