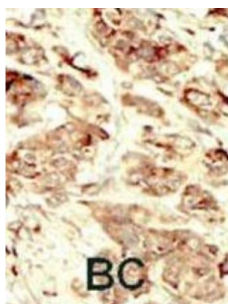


## Serine/threonine Kinase 35 (STK35) Antibody

Catalogue No.: abx033261



STK35 can interact with PDLIM1/CLP-36 in the cytoplasm and localize to actin stress fibers. The encoded kinase may be a regulator of actin stress fibers in nonmuscle cells. This protein has also been found in the nucleus.

**Target:** Serine/threonine Kinase 35 (STK35)

**Clonality:** Polyclonal

**Reactivity:** Human, Mouse

**Tested Applications:** ELISA, WB, IHC

**Host:** Rabbit

**Recommended dilutions:** WB: 1/1000, IHC-P: 1/50 - 1/100. Not tested in IHC-F. Optimal dilutions/concentrations should be determined by the end user.

# Datasheet

Version: 4.0.0  
Revision date: 13 Aug 2025



<b>Conjugation:</b>	Unconjugated
<b>Immunogen:</b>	KLH-conjugated synthetic peptide between 374-404 amino acids from the Central region of human STK35.
<b>Isotype:</b>	IgG
<b>Form:</b>	Liquid
<b>Purification:</b>	Purified through a protein G column, eluted with high and low pH buffers and neutralized immediately, followed by dialysis against PBS.
<b>Storage:</b>	Aliquot and store at -20°C. Avoid repeated freeze/thaw cycles.
<b>UniProt Primary AC:</b>	Q8TDR2 ( <a href="#">UniProt</a> , <a href="#">ExPASy</a> )
<b>KEGG:</b>	hsa:140901
<b>String:</b>	<a href="#">9606.ENSP00000370891</a>
<b>Molecular Weight:</b>	Calculated MW: 58.1 kDa
<b>Buffer:</b>	PBS containing 0.09% sodium azide.
<b>Note:</b>	THIS PRODUCT IS FOR RESEARCH USE ONLY. NOT FOR USE IN DIAGNOSTIC, THERAPEUTIC OR COSMETIC PROCEDURES. NOT FOR HUMAN OR ANIMAL CONSUMPTION.