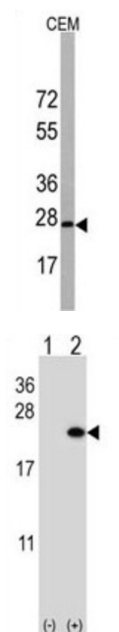


## Homeobox Protein BarH-Like 1 (BARX1) Antibody

Catalogue No.: abx033294



BarX1 is a member of the Bar subclass of homeobox transcription factors. Studies of the mouse and chick homolog suggest the encoded protein may play a role in developing teeth and craniofacial mesenchyme of neural crest origin. The protein may also be associated with differentiation of stomach epithelia.

**Target:** Homeobox Protein BarH-Like 1 (BARX1)

**Clonality:** Polyclonal

**Reactivity:** Human

**Tested Applications:** ELISA, WB

**Host:** Rabbit

**Recommended dilutions:** WB: 1/1000. Optimal dilutions/concentrations should be determined by the end user.

**Conjugation:** Unconjugated

**Immunogen:** KLH-conjugated synthetic peptide between 213-243 amino acids from the C-terminal region of human BarX1.

**Isotype:** IgG

**Form:** Liquid

# Datasheet

Version: 2.0.0

Revision date: 26 Jul 2025



<b>Purification:</b>	Purified Rabbit Polyclonal Antibody.
<b>Storage:</b>	Aliquot and store at -20°C. Avoid repeated freeze/thaw cycles.
<b>UniProt Primary AC:</b>	Q9HBU1 ( <a href="#">UniProt</a> , <a href="#">ExPASy</a> )
<b>String:</b>	<a href="#">9606.ENSP00000253968</a>
<b>Molecular Weight:</b>	Calculated MW: 27.3 kDa
<b>Buffer:</b>	PBS containing 0.09% sodium azide.
<b>Note:</b>	THIS PRODUCT IS FOR RESEARCH USE ONLY. NOT FOR USE IN DIAGNOSTIC, THERAPEUTIC OR COSMETIC PROCEDURES. NOT FOR HUMAN OR ANIMAL CONSUMPTION.

For Reference Only