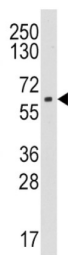


## Aromatase (CYP19A1) Antibody

Catalogue No.: abx033304



CYP19A1 is a member of the cytochrome P450 superfamily of enzymes. The cytochrome P450 proteins are monooxygenases which catalyze many reactions involved in drug metabolism and synthesis of cholesterol, steroids and other lipids. This protein localizes to the endoplasmic reticulum and catalyzes the last steps of estrogen biosynthesis, three successive hydroxylations of the A ring of androgens. Mutations in this gene can result in either increased or decreased aromatase activity; the associated phenotypes suggest that estrogen functions both as a sex steroid hormone and in growth or differentiation.

**Target:** Aromatase (CYP19A1)

**Clonality:** Polyclonal

**Reactivity:** Human

**Tested Applications:** ELISA, WB

**Host:** Rabbit

**Recommended dilutions:** WB: 1/1000. Optimal dilutions/concentrations should be determined by the end user.

**Conjugation:** Unconjugated

**Immunogen:** KLH-conjugated synthetic peptide between 221-253 amino acids from the Central region of human Aromatase (CYP19A1).

**Isotype:** IgG

**Form:** Liquid

**Purification:** Purified Rabbit Polyclonal Antibody.

**Storage:** Aliquot and store at -20°C. Avoid repeated freeze/thaw cycles.

**UniProt Primary AC:** P11511 ([UniProt](#), [ExPASy](#))

# Datasheet

Version: 4.0.0

Revision date: 09 Oct 2025



**KEGG:** hsa:1588

**String:** [9606.ENSP00000379683](#)

**Molecular Weight:** Calculated MW: 57.9 kDa

**Buffer:** PBS containing 0.09% sodium azide.

**Specificity:** Predicted to react with Rabbit CYP19A1.

**Note:** THIS PRODUCT IS FOR RESEARCH USE ONLY. NOT FOR USE IN DIAGNOSTIC, THERAPEUTIC OR COSMETIC PROCEDURES. NOT FOR HUMAN OR ANIMAL CONSUMPTION.

For Reference Only