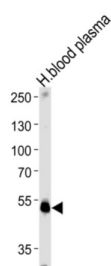
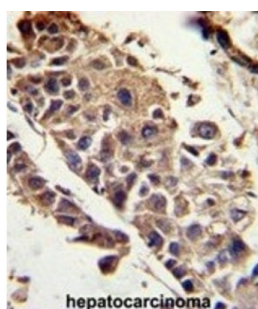
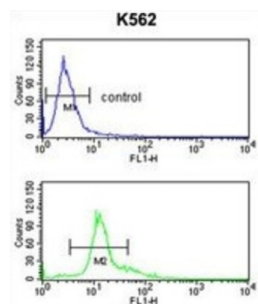


Pigment Epithelium-Derived Factor / PEDF (SERPINF1) Antibody

Catalogue No.: abx033321



Pigment Epithelium-Derived Factor / PEDF (SERPINF1) is a member of the serpin family. Serpins are a group of serine protease inhibitors, some of which have also been reported to exhibit neurotrophic activity.

Target: Pigment Epithelium-Derived Factor / PEDF (SERPINF1)

Clonality: Polyclonal

Reactivity: Human

Tested Applications: ELISA, WB, IHC, FCM

Host: Rabbit

Recommended dilutions: WB: 1/1000, IHC-P: 1/50 - 1/100, FCM: 1/10 - 1/50. Not tested in IHC-F. Optimal dilutions/concentrations should be determined by the end user.

Datasheet

Version: 4.0.0
Revision date: 04 Aug 2025



Conjugation:	Unconjugated
Immunogen:	KLH-conjugated synthetic peptide between 279-306 amino acids from the Central region of human SERPINF1.
Isotype:	IgG
Form:	Liquid
Purification:	Purified Rabbit Polyclonal Antibody.
Storage:	Aliquot and store at -20°C. Avoid repeated freeze/thaw cycles.
UniProt Primary AC:	P36955 (UniProt , ExPASy)
Gene Symbol:	SERPINF1
GeneID:	5176
OMIM:	172860
HGNC:	8824
KEGG:	hsa:5176
Ensembl:	ENSG00000132386
String:	9606.ENSP00000254722
Molecular Weight:	Calculated MW: 46.3 kDa
Buffer:	PBS containing 0.09% sodium azide.
Specificity:	Predicted to react with Mouse and Cow SERPINF1.
Note:	THIS PRODUCT IS FOR RESEARCH USE ONLY. NOT FOR USE IN DIAGNOSTIC, THERAPEUTIC OR COSMETIC PROCEDURES. NOT FOR HUMAN OR ANIMAL CONSUMPTION.