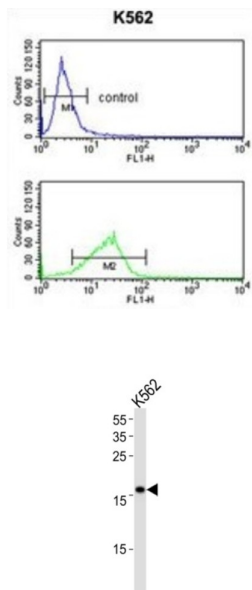


DNA Polymerase Epsilon 3, Accessory Subunit (POLE3) Antibody

Catalogue No.: abx033322



POLE3 is a histone-fold protein that interacts with other histone-fold proteins to bind DNA in a sequence-independent manner. These histone-fold protein dimers combine within larger enzymatic complexes for DNA transcription, replication, and packaging.

| | |
|-------------------------------|--|
| Target: | DNA Polymerase Epsilon 3, Accessory Subunit (POLE3) |
| Clonality: | Polyclonal |
| Reactivity: | Human |
| Tested Applications: | ELISA, WB, FCM |
| Host: | Rabbit |
| Recommended dilutions: | WB: 1/1000, FCM: 1/10 - 1/50. Optimal dilutions/concentrations should be determined by the end user. |
| Conjugation: | Unconjugated |
| Immunogen: | KLH-conjugated synthetic peptide between 5-34 amino acids from the N-terminal region of human POLE3. |
| Isotype: | IgG |
| Form: | Liquid |

Datasheet

Version: 3.0.0
Revision date: 14 Jun 2025



| | |
|----------------------------|--|
| Purification: | Purified Rabbit Polyclonal Antibody. |
| Storage: | Aliquot and store at -20°C. Avoid repeated freeze/thaw cycles. |
| UniProt Primary AC: | Q9NRF9 (UniProt , ExPASy) |
| NCBI Accession: | NP_001265184.1, NP_059139.3 |
| String: | 9606.ENSP00000363286 |
| Molecular Weight: | Calculated MW: 16.9 kDa |
| Buffer: | PBS containing 0.09% sodium azide. |
| Specificity: | Predicted to react with Mouse, Rat and Cow POLE3. |
| Note: | THIS PRODUCT IS FOR RESEARCH USE ONLY. NOT FOR USE IN DIAGNOSTIC, THERAPEUTIC OR COSMETIC PROCEDURES. NOT FOR HUMAN OR ANIMAL CONSUMPTION. |

For Reference Only