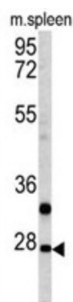
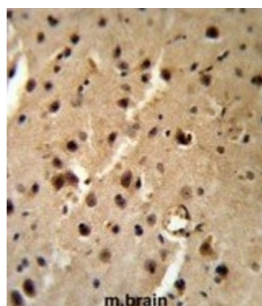


Parathyroid Hormone-Related Protein / PTHrP (PTHLH) Antibody

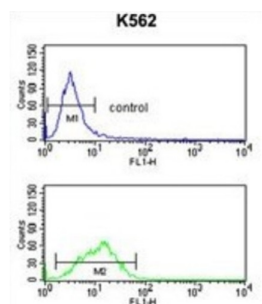
Catalogue No.: abx033336



WB analysis of mouse spleen tissue lysates (35 µg/lane).



IHC-P analysis of mouse brain tissue, with DAB staining.



Flow cytometry analysis of K562 cells (green) compared to a negative control cell (blue), using PTHLH antibody and FITC-conjugated goat anti-rabbit secondary antibody.

PTHLH is a member of the parathyroid hormone family. This hormone regulates endochondral bone development and epithelial-mesenchymal interactions during the formation of the mammary glands and teeth. This hormone is involved in lactation possibly by regulating the mobilization and transfer of calcium to the milk. The receptor of this hormone, PTHR1, is responsible for most cases of humoral hypercalcemia of malignancy.

Target: Parathyroid Hormone-Related Protein / PTHrP (PTHLH)

Clonality: Polyclonal

Reactivity: Human, Mouse

Tested Applications: WB, IHC, FCM

Host: Rabbit

Recommended dilutions: WB: 1/1000, IHC-P: 1/100 - 1/500, FCM: 1/10 - 1/50. Not tested in IHC-F. Optimal dilutions/concentrations should be determined by the end user.

Datasheet

Version: 2.0.0
Revision date: 29 May 2025



Conjugation:	Unconjugated
Immunogen:	KLH-conjugated synthetic peptide between 76-103 amino acids from the Central region of human PTHLH.
Isotype:	IgG
Form:	Liquid
Purification:	Purified by saturated ammonium sulfate (SAS) precipitation followed by dialysis against PBS.
Storage:	Aliquot and store at -20°C. Avoid repeated freeze/thaw cycles.
UniProt Primary AC:	P12272 (UniProt , ExPASy)
Gene Symbol:	PTHLH
GeneID:	5744
OMIM:	168470
HGNC:	9607
KEGG:	hsa:5744
Ensembl:	ENSG00000087494
Molecular Weight:	Calculated MW: 20.2 kDa
Buffer:	PBS containing 0.09% sodium azide.
Specificity:	Predicted to react with Rat PTHLH.
Note:	THIS PRODUCT IS FOR RESEARCH USE ONLY. NOT FOR USE IN DIAGNOSTIC, THERAPEUTIC OR COSMETIC PROCEDURES. NOT FOR HUMAN OR ANIMAL CONSUMPTION.