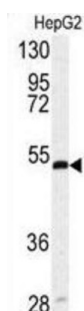
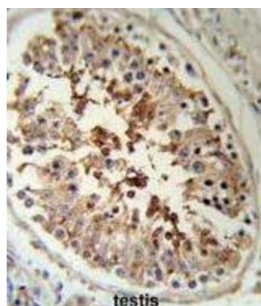
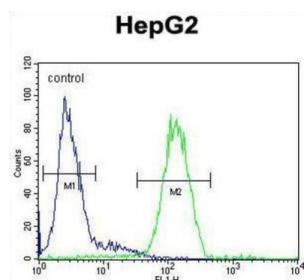


Serpin H1 (SERPINH1) Antibody

Catalogue No.: abx033356



SERPINH1 is a member of the serpin superfamily of serine proteinase inhibitors. Its expression is induced by heat shock. The protein localizes to the endoplasmic reticulum lumen and binds collagen; thus it is thought to be a molecular chaperone involved in the maturation of collagen molecules. Autoantibodies to this protein have been found in patients with rheumatoid arthritis.

Target: Serpin H1 (SERPINH1)

Clonality: Polyclonal

Reactivity: Human

Tested Applications: ELISA, WB, IHC, FCM

Host: Rabbit

Recommended dilutions: WB: 1/1000, IHC-P: 1/50 - 1/100, FCM: 1/10 - 1/50. Not tested in IHC-F. Optimal dilutions/concentrations should be determined by the end user.

Datasheet

Version: 4.0.0
Revision date: 13 Aug 2025



Conjugation:	Unconjugated
Immunogen:	KLH-conjugated synthetic peptide between 169-196 amino acids from the Central region of human SERPINH1.
Isotype:	IgG
Form:	Liquid
Purification:	Purified Rabbit Polyclonal Antibody.
Storage:	Aliquot and store at -20°C. Avoid repeated freeze/thaw cycles.
UniProt Primary AC:	P50454 (UniProt , ExPASy)
Gene Symbol:	SERPINH1
GeneID:	871
OMIM:	600943
HGNC:	1546
KEGG:	hsa:871
Ensembl:	ENSG00000149257
String:	9606.ENSP00000434412
Molecular Weight:	Calculated MW: 46.4 kDa
Buffer:	PBS containing 0.09% sodium azide.
Specificity:	Predicted to react with Mouse, Rat and Cow SERPINH1.
Note:	THIS PRODUCT IS FOR RESEARCH USE ONLY. NOT FOR USE IN DIAGNOSTIC, THERAPEUTIC OR COSMETIC PROCEDURES. NOT FOR HUMAN OR ANIMAL CONSUMPTION.