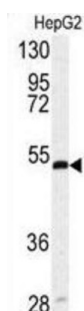
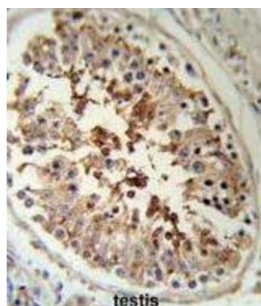
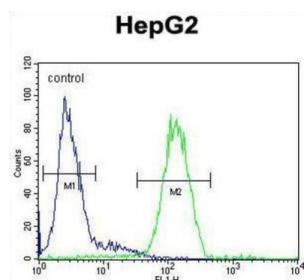


Serpin H1 (SERPINH1) Antibody

Catalogue No.: abx033356



SERPINH1 is a member of the serpin superfamily of serine proteinase inhibitors. Its expression is induced by heat shock. The protein localizes to the endoplasmic reticulum lumen and binds collagen; thus it is thought to be a molecular chaperone involved in the maturation of collagen molecules. Autoantibodies to this protein have been found in patients with rheumatoid arthritis.

Target: Serpin H1 (SERPINH1)

Clonality: Polyclonal

Reactivity: Human

Tested Applications: ELISA, WB, IHC, FCM

Host: Rabbit

Recommended dilutions: WB: 1/1000, IHC-P: 1/50 - 1/100, FCM: 1/10 - 1/50. Not tested in IHC-F. Optimal dilutions/concentrations should be determined by the end user.

Datasheet

Version: 3.0.0
Revision date: 05 Mar 2025



| | |
|----------------------------|--|
| Conjugation: | Unconjugated |
| Immunogen: | KLH-conjugated synthetic peptide between 169-196 amino acids from the Central region of human SERPINH1. |
| Isotype: | IgG |
| Form: | Liquid |
| Purification: | Purified Rabbit Polyclonal Antibody. |
| Storage: | Aliquot and store at -20°C. Avoid repeated freeze/thaw cycles. |
| UniProt Primary AC: | P50454 (UniProt , ExPASy) |
| KEGG: | hsa:871 |
| String: | 9606.ENSP00000434412 |
| Molecular Weight: | Calculated MW: 46.4 kDa |
| Buffer: | PBS containing 0.09% sodium azide. |
| Specificity: | Predicted to react with Mouse, Rat and Cow SERPINH1. |
| Note: | THIS PRODUCT IS FOR RESEARCH USE ONLY. NOT FOR USE IN DIAGNOSTIC, THERAPEUTIC OR COSMETIC PROCEDURES. NOT FOR HUMAN OR ANIMAL CONSUMPTION. |